

# LMCD1 Antibody (C-term)

Purified Rabbit Polyclonal Antibody (Pab)

Catalog # AP21108a

## Product Information

---

<b>Application</b>	WB, E
<b>Primary Accession</b>	<a href="#">Q9NZU5</a>
<b>Reactivity</b>	Human, Rat, Mouse
<b>Host</b>	Rabbit
<b>Clonality</b>	Polyclonal
<b>Isotype</b>	Rabbit IgG
<b>Clone Names</b>	RB40473
<b>Calculated MW</b>	40833

## Additional Information

---

<b>Gene ID</b>	29995
<b>Other Names</b>	LIM and cysteine-rich domains protein 1, Dyxin, LMCD1
<b>Target/Specificity</b>	This LMCD1 antibody is generated from a rabbit immunized with a KLH conjugated synthetic peptide between 316-350 amino acids from the C-terminal region of human LMCD1.
<b>Dilution</b>	WB~~1:1000 E~~Use at an assay dependent concentration.
<b>Format</b>	Purified polyclonal antibody supplied in PBS with 0.09% (W/V) sodium azide. This antibody is purified through a protein A column, followed by peptide affinity purification.
<b>Storage</b>	Maintain refrigerated at 2-8°C for up to 2 weeks. For long term storage store at -20°C in small aliquots to prevent freeze-thaw cycles.
<b>Precautions</b>	LMCD1 Antibody (C-term) is for research use only and not for use in diagnostic or therapeutic procedures.

## Protein Information

---

<b>Name</b>	LMCD1
<b>Function</b>	Transcriptional cofactor that restricts GATA6 function by inhibiting DNA-binding, resulting in repression of GATA6 transcriptional activation of downstream target genes. Represses GATA6- mediated trans activation of lung- and cardiac tissue-specific promoters. Inhibits DNA-binding by GATA4 and GATA1 to the cTNC promoter (By similarity). Plays a critical role in the development of cardiac hypertrophy via activation of calcineurin/nuclear

factor of activated T-cells signaling pathway.

**Cellular Location**

Cytoplasm. Nucleus. Note=May shuttle between the cytoplasm and the nucleus.

**Tissue Location**

Expressed in the heart (at protein level). Expressed in many tissues with highest abundance in skeletal muscle

## Background

---

Transcriptional cofactor that restricts GATA6 function by inhibiting DNA-binding, resulting in repression of GATA6 transcriptional activation of downstream target genes. Represses GATA6-mediated trans activation of lung- and cardiac tissue- specific promoters. Inhibits DNA-binding by GATA4 and GATA1 to the cTNC promoter (By similarity). Plays a critical role in the development of cardiac hypertrophy via activation of calcineurin/nuclear factor of activated T-cells signaling pathway.

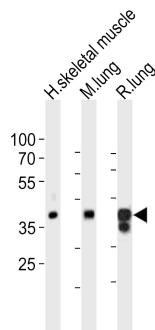
## References

---

Bespalova I.N.,et al.Genomics 63:69-74(2000).  
Holt H.H.,et al.Submitted (DEC-1999) to the EMBL/GenBank/DDBJ databases.  
Ota T.,et al.Nat. Genet. 36:40-45(2004).  
Rath N.,et al.Mol. Cell. Biol. 25:8864-8873(2005).  
Bian Z.Y.,et al.Hypertension 55:257-263(2010).

## Images

---



Western blot analysis of lysates from human skeletal muscle, mouse lung, rat lung tissue lysate (from left to right), using LMCD1 Antibody (C-term)(Cat. #AP21108a). AP21108a was diluted at 1:1000 at each lane. A goat anti-rabbit IgG H&L(HRP) at 1:10000 dilution was used as the secondary antibody. Lysates at 20ug per lane.

Please note: All products are 'FOR RESEARCH USE ONLY. NOT FOR USE IN DIAGNOSTIC OR THERAPEUTIC PROCEDURES'.