

(Mouse) Suz12 Antibody (Center)

Purified Rabbit Polyclonal Antibody (Pab)

Catalog # AP21111a

Product Information

Application	WB, E
Primary Accession	Q80U70
Reactivity	Human, Mouse
Host	Rabbit
Clonality	Polyclonal
Isotype	Rabbit IgG
Clone Names	RB51502
Calculated MW	83026

Additional Information

Gene ID	52615
Other Names	Polycomb protein Suz12, Suppressor of zeste 12 protein homolog, Suz12, D11Ert530e, Kiaa0160
Target/Specificity	This Mouse Suz12 antibody is generated from a rabbit immunized with a KLH conjugated synthetic peptide between 496-530 amino acids from the Central region of Mouse Suz12.
Dilution	WB~~1:1000 E~~Use at an assay dependent concentration.
Format	Purified polyclonal antibody supplied in PBS with 0.09% (W/V) sodium azide. This antibody is purified through a protein A column, followed by peptide affinity purification.
Storage	Maintain refrigerated at 2-8°C for up to 2 weeks. For long term storage store at -20°C in small aliquots to prevent freeze-thaw cycles.
Precautions	(Mouse) Suz12 Antibody (Center) is for research use only and not for use in diagnostic or therapeutic procedures.

Protein Information

Name	Suz12
Synonyms	D11Ert530e, Kiaa0160
Function	Polycomb group (PcG) protein. Component of the PRC2/EED-EZH2 complex, which methylates 'Lys-9' (H3K9me) and 'Lys-27' (H3K27me) of histone H3, leading to transcriptional repression of the affected target gene. The

PRC2/EED-EZH2 complex may also serve as a recruiting platform for DNA methyltransferases, thereby linking two epigenetic repression systems (By similarity). Genes repressed by the PRC2/EED- EZH2 complex include HOXA7, HOXB6 and HOXC8.

Cellular Location	Nucleus. Chromosome. Note=Localizes to the inactive X chromosome in trophoblast stem cells
Tissue Location	Expressed in embryonic stem cells.

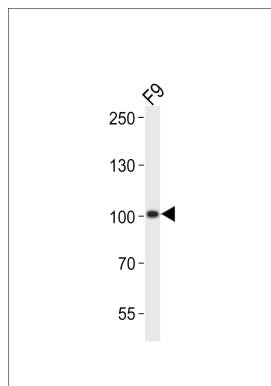
Background

Polycomb group (PcG) protein. Component of the PRC2/EED- EZH2 complex, which methylates 'Lys-9' (H3K9me) and 'Lys-27' (H3K27me) of histone H3, leading to transcriptional repression of the affected target gene. The PRC2/EED-EZH2 complex may also serve as a recruiting platform for DNA methyltransferases, thereby linking two epigenetic repression systems (By similarity). Genes repressed by the PRC2/EED-EZH2 complex include HOXA7, HOXB6 and HOXC8.

References

Okazaki N.,et al.DNA Res. 10:35-48(2003).
Church D.M.,et al.PLoS Biol. 7:E1000112-E1000112(2009).
Pasini D.,et al.EMBO J. 23:4061-4071(2004).
Umlauf D.,et al.Nat. Genet. 36:1296-1300(2004).
Kuzmichev A.,et al.Proc. Natl. Acad. Sci. U.S.A. 102:1859-1864(2005).

Images



Western blot analysis of lysate from mouse F9 cell line, using Suz12 Antibody (Center)(Cat. #AP21111a). AP21111a was diluted at 1:1000. A goat anti-rabbit IgG H&L(HRP) at 1:10000 dilution was used as the secondary antibody. Lysate at 20ug.

Please note: All products are 'FOR RESEARCH USE ONLY. NOT FOR USE IN DIAGNOSTIC OR THERAPEUTIC PROCEDURES'.