

(DANRE) hbae1 Antibody (Center)

Purified Rabbit Polyclonal Antibody (Pab)

Catalog # AP21112a

Product Information

Application	WB, E
Primary Accession	Q7ZT21
Reactivity	Zebrafish
Host	Rabbit
Clonality	Polyclonal
Isotype	Rabbit IgG
Clone Names	RB46577
Calculated MW	15588

Additional Information

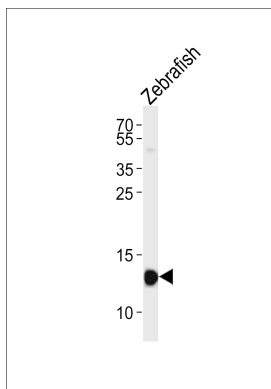
Gene ID	30597
Target/Specificity	This DANRE hbae1 antibody is generated from a rabbit immunized with a KLH conjugated synthetic peptide between 46-80 amino acids from the Central region of DANRE hbae1.
Dilution	WB~~1:1000 E~~Use at an assay dependent concentration.
Format	Purified polyclonal antibody supplied in PBS with 0.09% (W/V) sodium azide. This antibody is purified through a protein A column, followed by peptide affinity purification.
Storage	Maintain refrigerated at 2-8°C for up to 2 weeks. For long term storage store at -20°C in small aliquots to prevent freeze-thaw cycles.
Precautions	(DANRE) hbae1 Antibody (Center) is for research use only and not for use in diagnostic or therapeutic procedures.

Protein Information

Name	Q7ZT21
------	--------

Images

Western blot analysis of lysate from Zebrafish tissue lysate, using (DANRE) hbae1 Antibody (Center)(Cat. #AP21112a). AP21112a was diluted at 1:1000. A goat anti-rabbit IgG H&L(HRP) at 1:10000 dilution was used as



the secondary antibody. Lysate at 20ug.

Please note: All products are 'FOR RESEARCH USE ONLY. NOT FOR USE IN DIAGNOSTIC OR THERAPEUTIC PROCEDURES'.