

LIPI Antibody (Center)

Purified Rabbit Polyclonal Antibody (Pab)

Catalog # AP21120a

Product Information

Application	WB, E
Primary Accession	Q6XZB0
Reactivity	Human
Host	Rabbit
Clonality	Polyclonal
Isotype	Rabbit IgG
Clone Names	RB51031
Calculated MW	52922

Additional Information

Gene ID	149998
Other Names	Lipase member I, LIPI, 311-, Cancer/testis antigen 17, CT17, LPD lipase, Membrane-associated phosphatidic acid-selective phospholipase A1-beta, mPA-PLA1 beta, LIPI, LPDL
Target/Specificity	This LIPI antibody is generated from a rabbit immunized with a KLH conjugated synthetic peptide between 224-258 amino acids from the Central region of human LIPI.
Dilution	WB~~1:1000 E~~Use at an assay dependent concentration.
Format	Purified polyclonal antibody supplied in PBS with 0.09% (W/V) sodium azide. This antibody is purified through a protein A column, followed by peptide affinity purification.
Storage	Maintain refrigerated at 2-8°C for up to 2 weeks. For long term storage store at -20°C in small aliquots to prevent freeze-thaw cycles.
Precautions	LIPI Antibody (Center) is for research use only and not for use in diagnostic or therapeutic procedures.

Protein Information

Name	LIPI
Synonyms	LPDL
Function	Hydrolyzes specifically phosphatidic acid (PA) to produce 2- acyl lysophosphatidic acid (LPA; a potent bioactive lipid mediator) and fatty acid.

Does not hydrolyze other phospholipids, like phosphatidylserine (PS), phosphatidylcholine (PC) and phosphatidylethanolamine (PE) or triacylglycerol (TG).

Cellular Location	[Isoform 1]: Cell membrane. Secreted Note=May associate with lipid draft.
Tissue Location	Expressed in testis. Expressed exclusively at the connecting piece of the sperm.

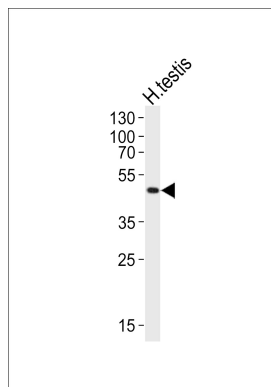
Background

Hydrolyzes specifically phosphatidic acid (PA) to produce 2-acyl lysophosphatidic acid (LPA; a potent bioactive lipid mediator) and fatty acid. Does not hydrolyze other phospholipids, like phosphatidylserine (PS), phosphatidylcholine (PC) and phosphatidylethanolamine (PE) or triacylglycerol (TG).

References

Hiramatsu T.,et al.J. Biol. Chem. 278:49438-49447(2003).
Wen X.-Y.,et al.Hum. Mol. Genet. 12:1131-1143(2003).
Hattori M.,et al.Nature 405:311-319(2000).

Images



Western blot analysis of lysate from human testis tissue lysate, using LIPI Antibody (Center)(Cat. #AP21120a). AP21120a was diluted at 1:1000. A goat anti-rabbit IgG H&L(HRP) at 1:10000 dilution was used as the secondary antibody. Lysate at 20ug.

Please note: All products are 'FOR RESEARCH USE ONLY. NOT FOR USE IN DIAGNOSTIC OR THERAPEUTIC PROCEDURES'.