

# DGCR14 Antibody (C-term)

Purified Rabbit Polyclonal Antibody (Pab)

Catalog # AP21121a

## Product Information

---

<b>Application</b>	WB, E
<b>Primary Accession</b>	<a href="#">Q96DF8</a>
<b>Reactivity</b>	Human, Rat, Mouse
<b>Host</b>	Rabbit
<b>Clonality</b>	Polyclonal
<b>Isotype</b>	Rabbit IgG
<b>Clone Names</b>	RB51730
<b>Calculated MW</b>	52568

## Additional Information

---

<b>Gene ID</b>	8220
<b>Other Names</b>	Protein DGCR14, DiGeorge syndrome critical region 13, DiGeorge syndrome critical region 14, DiGeorge syndrome protein H, DGS-H, Protein ES2, DGCR14, DGCR13, DGSH, DGS1, ES2
<b>Target/Specificity</b>	This DGCR14 antibody is generated from a rabbit immunized with a KLH conjugated synthetic peptide between 449-482 amino acids from the C-terminal region of human DGCR14.
<b>Dilution</b>	WB~~1:1000 E~~Use at an assay dependent concentration.
<b>Format</b>	Purified polyclonal antibody supplied in PBS with 0.09% (W/V) sodium azide. This antibody is purified through a protein A column, followed by peptide affinity purification.
<b>Storage</b>	Maintain refrigerated at 2-8°C for up to 2 weeks. For long term storage store at -20°C in small aliquots to prevent freeze-thaw cycles.
<b>Precautions</b>	DGCR14 Antibody (C-term) is for research use only and not for use in diagnostic or therapeutic procedures.

## Protein Information

---

<b>Name</b>	ESS2 ( <a href="#">HGNC:16817</a> )
<b>Function</b>	May be involved in pre-mRNA splicing.
<b>Cellular Location</b>	Nucleus {ECO:0000250 UniProtKB:P34420}.

**Tissue Location**

Highly expressed in heart, brain and skeletal muscle. Detected at low levels in placenta

**Background**

---

May be involved in pre-mRNA splicing.

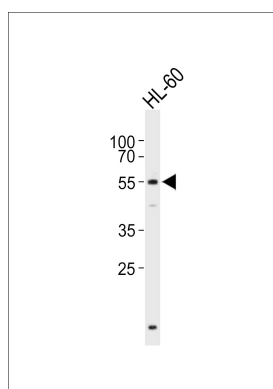
**References**

---

Lindsay E.A.,et al.Genomics 32:104-112(1996).  
Rizzu P.,et al.Mamm. Genome 7:639-643(1996).  
Collins J.E.,et al.Genome Biol. 5:R84.1-R84.11(2004).  
Gong W.,et al.Hum. Mol. Genet. 5:789-800(1996).  
Jurica M.S.,et al.RNA 8:426-439(2002).

**Images**

---



Western blot analysis of lysate from HL-60 cell line, using DGCR14 Antibody (C-term)(Cat. #AP21121a). AP21121a was diluted at 1:1000. A goat anti-rabbit IgG H&L(HRP) at 1:10000 dilution was used as the secondary antibody. Lysate at 20ug.

Please note: All products are 'FOR RESEARCH USE ONLY. NOT FOR USE IN DIAGNOSTIC OR THERAPEUTIC PROCEDURES'.