

(Mouse) Scx Antibody (N-term)

Purified Rabbit Polyclonal Antibody (Pab)

Catalog # AP21125a

Product Information

Application	WB, IHC-P, E
Primary Accession	Q64124
Reactivity	Human, Mouse
Host	Rabbit
Clonality	polyclonal
Isotype	Rabbit IgG
Clone Names	RB51093
Calculated MW	22239

Additional Information

Gene ID	20289
Other Names	Basic helix-loop-helix transcription factor scleraxis, Scx
Target/Specificity	This mouse Scx antibody is generated from a rabbit immunized with a KLH conjugated synthetic peptide between 69-102 amino acids from the N-terminal region of mouse Scx.
Dilution	WB~~1:1000 IHC-P~~1:100~500 E~~Use at an assay dependent concentration.
Format	Purified polyclonal antibody supplied in PBS with 0.09% (W/V) sodium azide. This antibody is purified through a protein A column, followed by peptide affinity purification.
Storage	Maintain refrigerated at 2-8°C for up to 2 weeks. For long term storage store at -20°C in small aliquots to prevent freeze-thaw cycles.
Precautions	(Mouse) Scx Antibody (N-term) is for research use only and not for use in diagnostic or therapeutic procedures.

Protein Information

Name	Scx
Function	Plays an early essential role in mesoderm formation, as well as a later role in formation of somite-derived chondrogenic lineages.
Cellular Location	Nucleus {ECO:0000255 PROSITE-ProRule:PRU00981}.
Tissue Location	Expressed in mesenchymal precursors of cartilage and in connective tissue.

Highly expressed in tendons in the limb, tongue and diaphragm and in cartilage of the bronchi

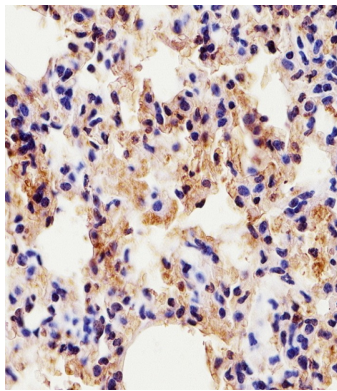
Background

Plays an early essential role in mesoderm formation, as well as a later role in formation of somite-derived chondrogenic lineages.

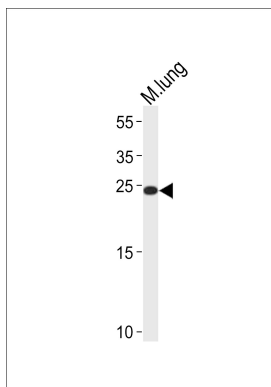
References

Cserjesi P., et al. Development 121:1099-1110(1995).
Brown D., et al. Development 126:4317-4329(1999).

Images



AP21125a staining Scx in Mouse lung tissue sections by Immunohistochemistry (IHC-P - paraformaldehyde-fixed, paraffin-embedded sections). Tissue was fixed with formaldehyde and blocked with 3% BSA for 0.5 hour at room temperature; antigen retrieval was by heat mediation with a citrate buffer (pH6). Samples were incubated with primary antibody (1/25) for 1 hour at 37°C. A undiluted biotinylated goat polyvalent antibody was used as the secondary antibody.



Western blot analysis of lysate from mouse lung tissue lysate, using Scx Antibody (N-term)(Cat. #AP21125a). AP21125a was diluted at 1:1000. A goat anti-rabbit IgG H&L(HRP) at 1:10000 dilution was used as the secondary antibody. Lysate at 20ug.

Please note: All products are 'FOR RESEARCH USE ONLY. NOT FOR USE IN DIAGNOSTIC OR THERAPEUTIC PROCEDURES'.