

# CD34 Antibody (C-term)

Purified Rabbit Polyclonal Antibody (Pab)

Catalog # AP21126a

## Product Information

---

<b>Application</b>	WB, FC, E
<b>Primary Accession</b>	<a href="#">P28906</a>
<b>Reactivity</b>	Human, Mouse
<b>Host</b>	Rabbit
<b>Clonality</b>	polyclonal
<b>Isotype</b>	Rabbit IgG
<b>Clone Names</b>	RB51646
<b>Calculated MW</b>	40716

## Additional Information

---

<b>Gene ID</b>	947
<b>Other Names</b>	Hematopoietic progenitor cell antigen CD34, CD34, CD34
<b>Target/Specificity</b>	This CD34 antibody is generated from a rabbit immunized with a KLH conjugated synthetic peptide between 356-390 amino acids from the C-terminal region of human CD34.
<b>Dilution</b>	WB~~1:1000 FC~~1:25 E~~Use at an assay dependent concentration.
<b>Format</b>	Purified polyclonal antibody supplied in PBS with 0.09% (W/V) sodium azide. This antibody is purified through a protein A column, followed by peptide affinity purification.
<b>Storage</b>	Maintain refrigerated at 2-8°C for up to 2 weeks. For long term storage store at -20°C in small aliquots to prevent freeze-thaw cycles.
<b>Precautions</b>	CD34 Antibody (C-term) is for research use only and not for use in diagnostic or therapeutic procedures.

## Protein Information

---

<b>Name</b>	CD34
<b>Function</b>	Possible adhesion molecule with a role in early hematopoiesis by mediating the attachment of stem cells to the bone marrow extracellular matrix or directly to stromal cells. Could act as a scaffold for the attachment of lineage specific glycans, allowing stem cells to bind to lectins expressed by stromal cells or other marrow components. Presents carbohydrate ligands to selectins.

**Cellular Location**

Membrane; Single-pass type I membrane protein.

**Tissue Location**

Selectively expressed on hematopoietic progenitor cells and the small vessel endothelium of a variety of tissues

## Background

---

Possible adhesion molecule with a role in early hematopoiesis by mediating the attachment of stem cells to the bone marrow extracellular matrix or directly to stromal cells. Could act as a scaffold for the attachment of lineage specific glycans, allowing stem cells to bind to lectins expressed by stromal cells or other marrow components. Presents carbohydrate ligands to selectins.

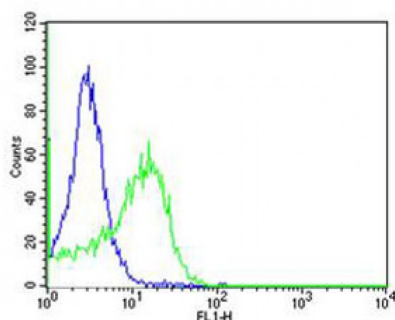
## References

---

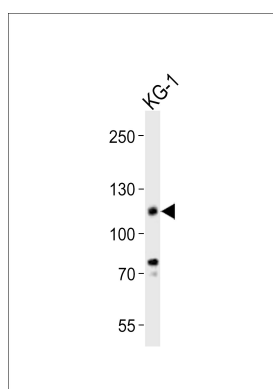
Simmons D.L.,et al.J. Immunol. 148:267-271(1992).  
Satterthwaite A.B.,et al.Genomics 12:788-794(1992).  
Nakamura Y.,et al.Exp. Hematol. 21:236-242(1993).  
Freund D.,et al.Submitted (JUN-2002) to the EMBL/GenBank/DBJ databases.  
Ota T.,et al.Nat. Genet. 36:40-45(2004).

## Images

---



Flow cytometric analysis of HT-29 cells using CD34 Antibody (C-term)(green, Cat#) compared to an isotype control of rabbit IgG(blue). was diluted at 1:25 dilution. An Alexa Fluor® 488 goat anti-rabbit IgG at 1:400 dilution was used as the secondary antibody.



Western blot analysis of lysate from KG-1 cell line, using CD34 Antibody (C-term)(Cat. #AP21126a). AP21126a was diluted at 1:1000. A goat anti-rabbit IgG H&L(HRP) at 1:10000 dilution was used as the secondary antibody. Lysate at 20ug.

Please note: All products are 'FOR RESEARCH USE ONLY. NOT FOR USE IN DIAGNOSTIC OR THERAPEUTIC PROCEDURES'.