

ADORA2A Antibody (C-term)

Purified Rabbit Polyclonal Antibody (Pab)

Catalog # AP21140a

Product Information

Application	WB, IHC-P, FC, E
Primary Accession	P29274
Reactivity	Human, Mouse, Rat
Host	Rabbit
Clonality	polyclonal
Isotype	Rabbit IgG
Clone Names	RB52103
Calculated MW	44707

Additional Information

Gene ID	135
Other Names	Adenosine receptor A2a, ADORA2A, ADORA2
Target/Specificity	This ADORA2A antibody is generated from a rabbit immunized with a KLH conjugated synthetic peptide between 347-381 amino acids from the C-terminal region of human ADORA2A.
Dilution	WB~~1:1000 IHC-P~~1:100~500 FC~~1:25 E~~Use at an assay dependent concentration.
Format	Purified polyclonal antibody supplied in PBS with 0.09% (W/V) sodium azide. This antibody is purified through a protein A column, followed by peptide affinity purification.
Storage	Maintain refrigerated at 2-8°C for up to 2 weeks. For long term storage store at -20°C in small aliquots to prevent freeze-thaw cycles.
Precautions	ADORA2A Antibody (C-term) is for research use only and not for use in diagnostic or therapeutic procedures.

Protein Information

Name	ADORA2A
Synonyms	ADORA2
Function	Receptor for adenosine (By similarity). The activity of this receptor is mediated by G proteins which activate adenylyl cyclase (By similarity).

Cellular Location

Cell membrane {ECO:0000250|UniProtKB:P30543}; Multi-pass membrane protein {ECO:0000250|UniProtKB:P30543} Note=Colocalizes with GAS2L2 at neuronal processes {ECO:0000250|UniProtKB:P30543}

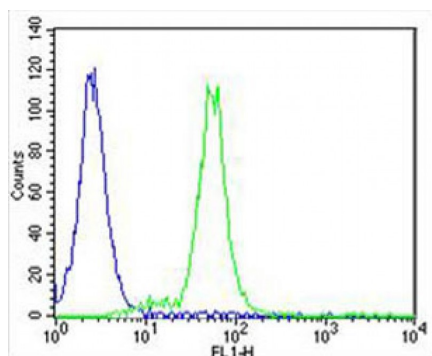
Background

Receptor for adenosine. The activity of this receptor is mediated by G proteins which activate adenylyl cyclase.

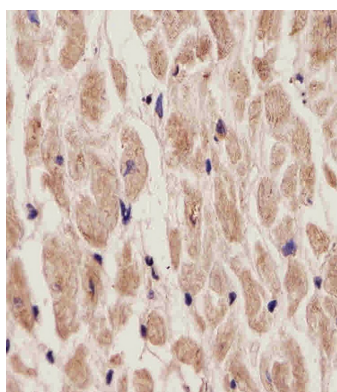
References

Tiffany H.L.,et al.Submitted (JUL-1992) to the EMBL/GenBank/DDBJ databases.
Salvatore C.A.,et al.Submitted (SEP-1992) to the EMBL/GenBank/DDBJ databases.
Furlong T.J.,et al.Brain Res. Mol. Brain Res. 15:62-66(1992).
Le F.,et al.Biochem. Biophys. Res. Commun. 223:461-467(1996).
Puhl H.L. III,et al.Submitted (JUL-2002) to the EMBL/GenBank/DDBJ databases.

Images

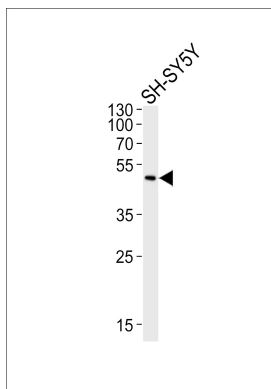


Overlay histogram showing SH-SY5Y cells stained with AP21140a (green line). The cells were fixed with 4% paraformaldehyde (10 min) and then permeabilized with 90% methanol for 10 min. The cells were then incubated in 2% bovine serum albumin to block non-specific protein-protein interactions followed by the antibody (AP21140a, 1:25 dilution) for 60 min at 37°C. The secondary antibody used was Alexa Fluor® 488 goat anti-rabbit IgG (H+L) (1583138) at 1/400 dilution for 40 min at 37°C. Isotype control antibody (blue line) was rabbit IgG1 (1µg/1x10⁶ cells) used under the same conditions. Acquisition of >10, 000 events was performed.



AP21140a staining ADORA2A in Human heart tissue sections by Immunohistochemistry (IHC-P - paraformaldehyde-fixed, paraffin-embedded sections). Tissue was fixed with formaldehyde and blocked with 3% BSA for 0.5 hour at room temperature; antigen retrieval was by heat mediation with a citrate buffer (pH6). Samples were incubated with primary antibody (1/25) for 1 hours at 37°C. A undiluted biotinylated goat polyvalent antibody was used as the secondary antibody.

Western blot analysis of lysate from SH-SY5Y cell line, using ADORA2A Antibody (C-term)(Cat. #AP21140a). AP21140a was diluted at 1:1000. A goat anti-rabbit IgG H&L(HRP) at 1:10000 dilution was used as the secondary antibody. Lysate at 20ug.



Please note: All products are 'FOR RESEARCH USE ONLY. NOT FOR USE IN DIAGNOSTIC OR THERAPEUTIC PROCEDURES'.