

# (DANRE) mtmr14 Antibody (C-Term)

Purified Rabbit Polyclonal Antibody (Pab)

Catalog # AP21142a

## Product Information

---

<b>Application</b>	WB, E
<b>Primary Accession</b>	<a href="#">E7FOC5</a>
<b>Reactivity</b>	Human, Zebrafish, Mouse
<b>Host</b>	Rabbit
<b>Clonality</b>	polyclonal
<b>Isotype</b>	Rabbit IgG
<b>Clone Names</b>	RB52012
<b>Calculated MW</b>	70717

## Additional Information

---

<b>Gene ID</b>	323929
<b>Target/Specificity</b>	This danre mtmr14 antibody is generated from a rabbit immunized with a KLH conjugated synthetic peptide between 614-647 amino acids from the danre region of danre mtmr14.
<b>Dilution</b>	WB~~1:1000 E~~Use at an assay dependent concentration.
<b>Format</b>	Purified polyclonal antibody supplied in PBS with 0.09% (W/V) sodium azide. This antibody is purified through a protein A column, followed by peptide affinity purification.
<b>Storage</b>	Maintain refrigerated at 2-8°C for up to 2 weeks. For long term storage store at -20°C in small aliquots to prevent freeze-thaw cycles.
<b>Precautions</b>	(DANRE) mtmr14 Antibody (C-Term) is for research use only and not for use in diagnostic or therapeutic procedures.

## Protein Information

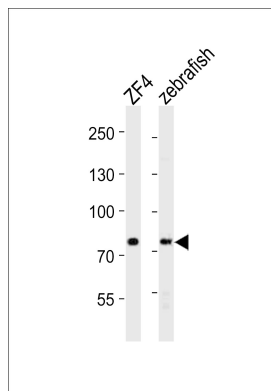
---

<b>Name</b>	E7FOC5
-------------	--------

## Images

---

Western blot analysis of lysates from zebra fish ZF4 cell line, zebrafish tissue lysate(from left to right), using (DANRE) mtmr14 Antibody (C-Term)(Cat. #AP21142a). AP21142a was diluted at 1:1000 at each lane. A goat



anti-rabbit IgG H&L(HRP) at 1:10000 dilution was used as the secondary antibody. Lysates at 20ug per lane.

Please note: All products are 'FOR RESEARCH USE ONLY. NOT FOR USE IN DIAGNOSTIC OR THERAPEUTIC PROCEDURES'.