

(Mouse) Cldn6 Antibody (C-term)

Purified Rabbit Polyclonal Antibody (Pab)

Catalog # AP21145a

Product Information

Application	WB, FC, E
Primary Accession	Q9Z262
Reactivity	Mouse
Host	Rabbit
Clonality	polyclonal
Isotype	Rabbit IgG
Clone Names	RB51201
Calculated MW	23388

Additional Information

Gene ID	54419
Other Names	Claudin-6, Skullin, Cldn6
Target/Specificity	This Mouse Cldn6 antibody is generated from a rabbit immunized with a KLH conjugated synthetic peptide between 186-229 amino acids from the C-terminal region of mouse Cldn6.
Dilution	WB~~1:1000 FC~~1:25 E~~Use at an assay dependent concentration.
Format	Purified polyclonal antibody supplied in PBS with 0.09% (W/V) sodium azide. This antibody is purified through a protein A column, followed by peptide affinity purification.
Storage	Maintain refrigerated at 2-8°C for up to 2 weeks. For long term storage store at -20°C in small aliquots to prevent freeze-thaw cycles.
Precautions	(Mouse) Cldn6 Antibody (C-term) is for research use only and not for use in diagnostic or therapeutic procedures.

Protein Information

Name	Cldn6
Function	Plays a major role in tight junction-specific obliteration of the intercellular space, through calcium-independent cell-adhesion activity.
Cellular Location	Cell junction, tight junction. Cell membrane; Multi-pass membrane protein
Tissue Location	Expressed mostly in embryonic tissues.

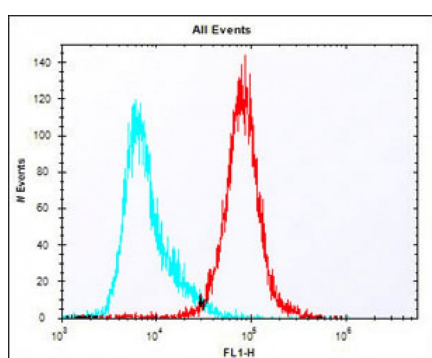
Background

Plays a major role in tight junction-specific obliteration of the intercellular space, through calcium-independent cell-adhesion activity (By similarity).

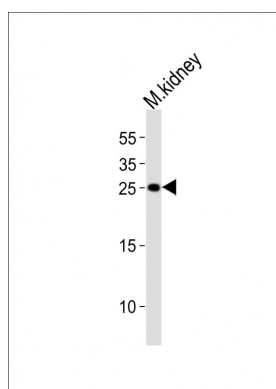
References

Morita K.,et al.Proc. Natl. Acad. Sci. U.S.A. 96:511-516(1999).
Troy T.,et al.Submitted (FEB-1999) to the EMBL/GenBank/DBJ databases.
Carninci P.,et al.Science 309:1559-1563(2005).
Itoh M.,et al.J. Cell Biol. 147:1351-1363(1999).

Images



Overlay histogram showing colon26 cells stained with AP21145a (red line). The cells were fixed with 2% paraformaldehyde (10 min) and then permeabilized with 90% methanol for 10 min. The cells were then incubated in 2% bovine serum albumin to block non-specific protein-protein interactions followed by the antibody (AP21145a, 1:25 dilution) for 60 min at 37°C. The secondary antibody used was Alexa Fluor® 488 goat anti-rabbit IgG (H+L) (1583138) at 1/400 dilution for 40 min at 37°C. Isotype control antibody (blue line) was rabbit IgG1 (1µg/1×10⁶ cells) used under the same conditions. Acquisition of >10, 000 events was performed.



Western blot analysis of lysate from mouse kidney tissue lysate, using Cldn6 Antibody (C-term)(Cat. #AP21145a). AP21145a was diluted at 1:1000. A goat anti-rabbit IgG H&L(HRP) at 1:10000 dilution was used as the secondary antibody. Lysate at 20ug.

Please note: All products are 'FOR RESEARCH USE ONLY. NOT FOR USE IN DIAGNOSTIC OR THERAPEUTIC PROCEDURES'.