

# FGF4 Antibody

Purified Rabbit Polyclonal Antibody (Pab)

Catalog # AP21146a

## Product Information

---

<b>Application</b>	WB, E
<b>Primary Accession</b>	<a href="#">P08620</a>
<b>Reactivity</b>	Human, Mouse
<b>Host</b>	Rabbit
<b>Clonality</b>	polyclonal
<b>Isotype</b>	Rabbit IgG
<b>Clone Names</b>	RB52138
<b>Calculated MW</b>	22048

## Additional Information

---

<b>Gene ID</b>	2249
<b>Other Names</b>	Fibroblast growth factor 4, FGF-4, Heparin secretory-transforming protein 1, HST, HST-1, HSTF-1, Heparin-binding growth factor 4, HBGF-4, Transforming protein KS3, FGF4, HST, HSTF1, KS3
<b>Target/Specificity</b>	This FGF4 antibody is generated from a rabbit immunized with a recombinant protein of human FGF4.
<b>Dilution</b>	WB~~1:1000 E~~Use at an assay dependent concentration.
<b>Format</b>	Purified polyclonal antibody supplied in PBS with 0.09% (W/V) sodium azide. This antibody is purified through a protein A column, followed by peptide affinity purification.
<b>Storage</b>	Maintain refrigerated at 2-8°C for up to 2 weeks. For long term storage store at -20°C in small aliquots to prevent freeze-thaw cycles.
<b>Precautions</b>	FGF4 Antibody is for research use only and not for use in diagnostic or therapeutic procedures.

## Protein Information

---

<b>Name</b>	FGF4 ( <a href="#">HGNC:3682</a> )
<b>Function</b>	Plays an important role in the regulation of embryonic development, cell proliferation, and cell differentiation. Required for normal limb and cardiac valve development during embryogenesis. May play a role in embryonic molar tooth bud development via inducing the expression of MSX1, MSX2 and MSX1-mediated expression of SDC1 in dental mesenchyme cells (By

similarity).

#### Cellular Location

Secreted.

## Background

---

Plays an important role in the regulation of embryonic development, cell proliferation, and cell differentiation. Required for normal limb and cardiac valve development during embryogenesis.

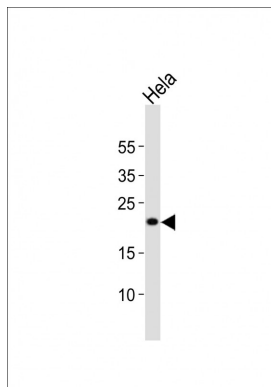
## References

---

Mayshar Y.,et al.Stem Cells 26:767-774(2008).  
Yoshida T.,et al.Proc. Natl. Acad. Sci. U.S.A. 84:7305-7309(1987).  
Taira M.,et al.Proc. Natl. Acad. Sci. U.S.A. 84:2980-2984(1987).  
Delli-Bovi P.,et al.Cell 50:729-737(1987).  
Ornitz D.M.,et al.J. Biol. Chem. 271:15292-15297(1996).

## Images

---



Western blot analysis of lysate from HeLa cell line, using FGF4 Antibody(Cat. #AP21146a). AP21146a was diluted at 1:4000. A goat anti-rabbit IgG H&L(HRP) at 1:10000 dilution was used as the secondary antibody. Lysate at 20ug.

Please note: All products are 'FOR RESEARCH USE ONLY. NOT FOR USE IN DIAGNOSTIC OR THERAPEUTIC PROCEDURES'.