

LRTOMT Antibody (N-term)

Purified Rabbit Polyclonal Antibody (Pab)

Catalog # AP21148a

Product Information

Application	WB, E
Primary Accession	Q8WZ04
Reactivity	Human
Host	Rabbit
Clonality	polyclonal
Isotype	Rabbit IgG
Clone Names	RB49330
Calculated MW	32155

Additional Information

Gene ID	220074
Other Names	Transmembrane O-methyltransferase, Catechol O-methyltransferase 2, Protein LRTOMT2, LRTOMT, COMT2, TOMT
Target/Specificity	This LRTOMT antibody is generated from a rabbit immunized with a KLH conjugated synthetic peptide between 2-36 amino acids from the N-terminal region of human LRTOMT.
Dilution	WB~~1:4000 E~~Use at an assay dependent concentration.
Format	Purified polyclonal antibody supplied in PBS with 0.09% (W/V) sodium azide. This antibody is purified through a protein A column, followed by peptide affinity purification.
Storage	Maintain refrigerated at 2-8°C for up to 2 weeks. For long term storage store at -20°C in small aliquots to prevent freeze-thaw cycles.
Precautions	LRTOMT Antibody (N-term) is for research use only and not for use in diagnostic or therapeutic procedures.

Protein Information

Name	TOMT (HGNC:55527)
Function	Catalyzes the O-methylation, and thereby the inactivation, of catecholamine neurotransmitters and catechol hormones (By similarity). Required for auditory function (PubMed: 18794526). Component of the cochlear hair cell's mechanotransduction (MET) machinery. Involved in the assembly of the asymmetric tip-link MET complex. Required for transportation of TMC1 and

TMC2 proteins into the mechanically sensitive stereocilia of the hair cells. The function in MET is independent of the enzymatic activity (By similarity).

Cellular Location

[Isoform 1]: Membrane; Single-pass membrane protein

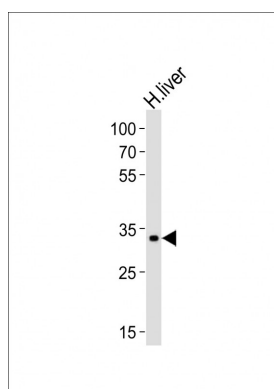
Background

Catalyzes the O-methylation, and thereby the inactivation, of catecholamine neurotransmitters and catechol hormones (By similarity). Required for auditory function.

References

Ahmed Z.M.,et al.Nat. Genet. 40:1335-1340(2008).
Wan D.,et al.Proc. Natl. Acad. Sci. U.S.A. 101:15724-15729(2004).
Ota T.,et al.Nat. Genet. 36:40-45(2004).
Taylor T.D.,et al.Nature 440:497-500(2006).
Du X.,et al.Proc. Natl. Acad. Sci. U.S.A. 105:14609-14614(2008).

Images



Western blot analysis of lysate from human liver tissue lysate, using LRTOMT Antibody (N-term)(Cat. #AP21148a). AP21148a was diluted at 1:4000. A goat anti-rabbit IgG H&L(HRP) at 1:10000 dilution was used as the secondary antibody. Lysate at 20ug.

Please note: All products are 'FOR RESEARCH USE ONLY. NOT FOR USE IN DIAGNOSTIC OR THERAPEUTIC PROCEDURES'.