

# POC1A Antibody (C-term)

Purified Rabbit Polyclonal Antibody (Pab)

Catalog # AP21149a

## Product Information

---

<b>Application</b>	WB, E
<b>Primary Accession</b>	<a href="#">Q8NBT0</a>
<b>Reactivity</b>	Human
<b>Host</b>	Rabbit
<b>Clonality</b>	polyclonal
<b>Isotype</b>	Rabbit IgG
<b>Clone Names</b>	RB49679
<b>Calculated MW</b>	45009

## Additional Information

---

<b>Gene ID</b>	25886
<b>Other Names</b>	POC1 centriolar protein homolog A, Pix2, Proteome of centriole protein 1A, WD repeat-containing protein 51A, POC1A, WDR51A
<b>Target/Specificity</b>	This POC1A antibody is generated from a rabbit immunized with a KLH conjugated synthetic peptide between 326-360 amino acids from the C-terminal region of human POC1A.
<b>Dilution</b>	WB~~1:1000-1:4000 E~~Use at an assay dependent concentration.
<b>Format</b>	Purified polyclonal antibody supplied in PBS with 0.09% (W/V) sodium azide. This antibody is purified through a protein A column, followed by peptide affinity purification.
<b>Storage</b>	Maintain refrigerated at 2-8°C for up to 2 weeks. For long term storage store at -20°C in small aliquots to prevent freeze-thaw cycles.
<b>Precautions</b>	POC1A Antibody (C-term) is for research use only and not for use in diagnostic or therapeutic procedures.

## Protein Information

---

<b>Name</b>	POC1A
<b>Synonyms</b>	WDR51A
<b>Function</b>	Plays an important role in centriole assembly and/or stability and ciliogenesis. Involved in early steps of centriole duplication, as well as in the later steps of centriole length control. Acts in concert with POC1B to ensure

centriole integrity and proper mitotic spindle formation.

#### Cellular Location

Cytoplasm, cytoskeleton, microtubule organizing center, centrosome. Cytoplasm, cytoskeleton, microtubule organizing center, centrosome, centriole Cytoplasm, cytoskeleton, cilium basal body. Cytoplasm, cytoskeleton, spindle pole. Note=Component of both mother and daughter centrioles

## Background

---

Plays an important role in centriole assembly and/or stability and ciliogenesis. Involved in early steps of centriole duplication, as well as in the later steps of centriole length control. Acts in concert with POC1B to ensure centriole integrity and proper mitotic spindle formation.

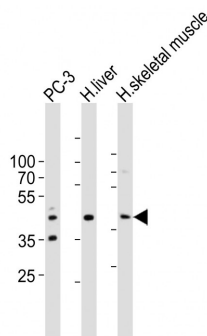
## References

---

Ota T.,et al.Nat. Genet. 36:40-45(2004).  
Muzny D.M.,et al.Nature 440:1194-1198(2006).  
Bechtel S.,et al.BMC Genomics 8:399-399(2007).  
Hames R.S.,et al.Exp. Cell Res. 314:574-589(2008).  
Pearson C.G.,et al.J. Cell Biol. 187:905-920(2009).

## Images

---



Western blot analysis of lysates from PC-3 cell line, human liver, human skeletal muscle tissue lysate (from left to right), using POC1A Antibody (C-term) (Cat. #AP21149a). A goat anti-rabbit IgG H&L (HRP) at 1:10000 dilution was used as the secondary antibody. Lysates at 20ug per lane.

Please note: All products are 'FOR RESEARCH USE ONLY. NOT FOR USE IN DIAGNOSTIC OR THERAPEUTIC PROCEDURES'.