

ACAP2 Antibody (C-term)

Purified Rabbit Polyclonal Antibody (Pab)

Catalog # AP21151a

Product Information

Application	WB, E
Primary Accession	Q15057
Reactivity	Human, Rat, Mouse
Host	Rabbit
Clonality	polyclonal
Isotype	Rabbit IgG
Clone Names	RB51844
Calculated MW	88029

Additional Information

Gene ID	23527
Other Names	Arf-GAP with coiled-coil, ANK repeat and PH domain-containing protein 2, Centaurin-beta-2, Cnt-b2, ACAP2, CENTB2, KIAA0041
Target/Specificity	This ACAP2 antibody is generated from a rabbit immunized with a KLH conjugated synthetic peptide between 764-798 amino acids from the C-terminal region of human ACAP2.
Dilution	WB~~1:1000-1:4000 E~~Use at an assay dependent concentration.
Format	Purified polyclonal antibody supplied in PBS with 0.09% (W/V) sodium azide. This antibody is purified through a protein A column, followed by peptide affinity purification.
Storage	Maintain refrigerated at 2-8°C for up to 2 weeks. For long term storage store at -20°C in small aliquots to prevent freeze-thaw cycles.
Precautions	ACAP2 Antibody (C-term) is for research use only and not for use in diagnostic or therapeutic procedures.

Protein Information

Name	ACAP2
Synonyms	CENTB2, KIAA0041
Function	GTPase-activating protein (GAP) for ADP ribosylation factor 6 (ARF6). Doesn't show GAP activity for RAB35 (PubMed: 30905672).

Cellular Location Cell membrane. Endosome membrane; Peripheral membrane protein.
Note=Colocalizes with RAB35 at the membrane protrusions of HEK293T cells.

Tissue Location Widely expressed. Highest level in lung.

Background

GTPase-activating protein (GAP) for ADP ribosylation factor 6 (ARF6).

References

Jackson T.R.,et al.J. Cell Biol. 151:627-638(2000).

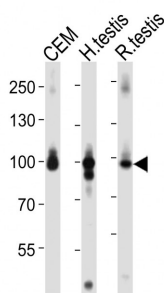
Nomura N.,et al.DNA Res. 1:223-229(1994).

Ohara O.,et al.Submitted (JAN-2003) to the EMBL/GenBank/DDBJ databases.

Ota T.,et al.Nat. Genet. 36:40-45(2004).

Mural R.J.,et al.Submitted (SEP-2005) to the EMBL/GenBank/DDBJ databases.

Images



Western blot analysis of lysates from CEM cell line, human testis, rat testis tissue lysate (from left to right), using ACAP2 Antibody (C-term)(Cat. #AP21151a). A goat anti-rabbit IgG H&L(HRP) at 1:10000 dilution was used as the secondary antibody. Lysates at 20ug per lane.

Please note: All products are 'FOR RESEARCH USE ONLY. NOT FOR USE IN DIAGNOSTIC OR THERAPEUTIC PROCEDURES'.