

(Mouse) Tal1 Antibody (Center)

Purified Rabbit Polyclonal Antibody (Pab)

Catalog # AP21155a

Product Information

Application	WB, E
Primary Accession	P22091
Reactivity	Human, Mouse
Host	Rabbit
Clonality	polyclonal
Isotype	Rabbit IgG
Clone Names	RB50954
Calculated MW	34279

Additional Information

Gene ID	21349
Other Names	T-cell acute lymphocytic leukemia protein 1 homolog, TAL-1, Stem cell protein, Tal1, Scl, Tal-1
Target/Specificity	This mouse Tal1 antibody is generated from a rabbit immunized with a KLH conjugated synthetic peptide between 154-188 amino acids from the Central region of mouse Tal1.
Dilution	WB~~1:1000 E~~Use at an assay dependent concentration.
Format	Purified polyclonal antibody supplied in PBS with 0.09% (W/V) sodium azide. This antibody is purified through a protein A column, followed by peptide affinity purification.
Storage	Maintain refrigerated at 2-8°C for up to 2 weeks. For long term storage store at -20°C in small aliquots to prevent freeze-thaw cycles.
Precautions	(Mouse) Tal1 Antibody (Center) is for research use only and not for use in diagnostic or therapeutic procedures.

Protein Information

Name	Tal1
Synonyms	Scl, Tal-1
Function	Implicated in the genesis of hemopoietic malignancies. It may play an important role in hemopoietic differentiation. Serves as a positive regulator of erythroid differentiation.

Cellular Location Nucleus {ECO:0000255 | PROSITE-ProRule:PRU00981, ECO:0000269 | PubMed:9391090}

Tissue Location Erythroid and myeloid cells.

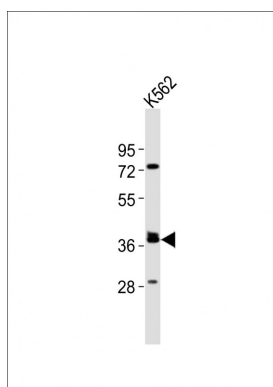
Background

Implicated in the genesis of hemopoietic malignancies. It may play an important role in hemopoietic differentiation. Serves as a positive regulator of erythroid differentiation.

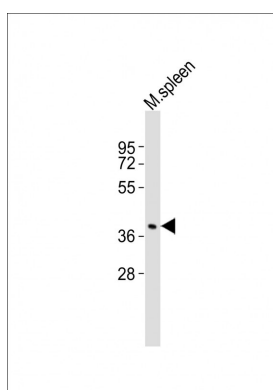
References

Begley C.G.,et al.Proc. Natl. Acad. Sci. U.S.A. 88:869-873(1991).
Visvader J.E.,et al.Proc. Natl. Acad. Sci. U.S.A. 94:13707-13712(1997).
Tang T.,et al.J. Biol. Chem. 277:18365-18372(2002).
Goardon N.,et al.EMBO J. 25:357-366(2006).

Images



Anti-(Mouse) Tal1 Antibody (Center) at 1:2000 dilution + K562 whole cell lysates Lysates/proteins at 20 µg per lane. Secondary Goat Anti-Rabbit IgG, (H+L), Peroxidase conjugated at 1/10000 dilution Predicted band size : 34 kDa Blocking/Dilution buffer: 5% NFDM/TBST.



Anti-(Mouse) Tal1 Antibody (Center) at 1:1000 dilution + mouse spleen lysates Lysates/proteins at 20 µg per lane. Secondary Goat Anti-Rabbit IgG, (H+L), Peroxidase conjugated at 1/10000 dilution Predicted band size : 34kDa Blocking/Dilution buffer: 5% NFDM/TBST.

Please note: All products are 'FOR RESEARCH USE ONLY. NOT FOR USE IN DIAGNOSTIC OR THERAPEUTIC PROCEDURES'.