

# (Mouse) Epha1 Antibody (Center)

Purified Rabbit Polyclonal Antibody (Pab)

Catalog # AP21159a

## Product Information

---

<b>Application</b>	WB, E
<b>Primary Accession</b>	<a href="#">Q60750</a>
<b>Reactivity</b>	Human, Mouse
<b>Host</b>	Rabbit
<b>Clonality</b>	polyclonal
<b>Isotype</b>	Rabbit IgG
<b>Clone Names</b>	RB51137
<b>Calculated MW</b>	108578

## Additional Information

---

<b>Gene ID</b>	13835
<b>Other Names</b>	Ephrin type-A receptor 1, mEpha1, Embryonic stem cell kinase, Tyrosine-protein kinase receptor ESK, Epha1, Esk
<b>Target/Specificity</b>	This mouse Epha1 antibody is generated from a rabbit immunized with a KLH conjugated synthetic peptide between 453-487 amino acids from the Central region of mouse Epha1.
<b>Dilution</b>	WB~~1:2000 E~~Use at an assay dependent concentration.
<b>Format</b>	Purified polyclonal antibody supplied in PBS with 0.09% (W/V) sodium azide. This antibody is purified through a protein A column, followed by peptide affinity purification.
<b>Storage</b>	Maintain refrigerated at 2-8°C for up to 2 weeks. For long term storage store at -20°C in small aliquots to prevent freeze-thaw cycles.
<b>Precautions</b>	(Mouse) Epha1 Antibody (Center) is for research use only and not for use in diagnostic or therapeutic procedures.

## Protein Information

---

<b>Name</b>	Epha1
<b>Synonyms</b>	Esk
<b>Function</b>	Receptor tyrosine kinase which binds promiscuously membrane- bound ephrin-A family ligands residing on adjacent cells, leading to contact-dependent bidirectional signaling into neighboring cells. The signaling

pathway downstream of the receptor is referred to as forward signaling while the signaling pathway downstream of the ephrin ligand is referred to as reverse signaling. Binds with a low affinity EFNA3 and EFNA4 and with a high affinity to EFNA1 which most probably constitutes its cognate/functional ligand. Upon activation by EFNA1 induces cell attachment to the extracellular matrix inhibiting cell spreading and motility through regulation of ILK and downstream RHOA and RAC. Also plays a role in angiogenesis and regulates cell proliferation. May play a role in apoptosis.

**Cellular Location**

Cell membrane; Single-pass type I membrane protein

**Tissue Location**

Preferentially expressed in epithelial cells including skin, kidney, liver and thymus (PubMed:11519828, PubMed:18802966). Expressed in myogenic progenitor cells (PubMed:27446912).

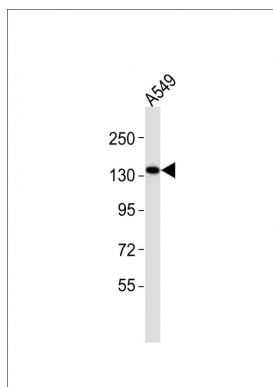
**Background**

Receptor tyrosine kinase which binds promiscuously membrane-bound ephrin-A family ligands residing on adjacent cells, leading to contact-dependent bidirectional signaling into neighboring cells. The signaling pathway downstream of the receptor is referred to as forward signaling while the signaling pathway downstream of the ephrin ligand is referred to as reverse signaling. Binds with a low affinity EFNA3 and EFNA4 and with a high affinity to EFNA1 which most probably constitutes its cognate/functional ligand. Upon activation by EFNA1 induces cell attachment to the extracellular matrix inhibiting cell spreading and motility through regulation of ILK and downstream RHOA and RAC. Plays also a role in angiogenesis and regulates cell proliferation. May play a role in apoptosis.

**References**

Coulthard M.G.,et al.Growth Factors 18:303-317(2001).  
Carninci P.,et al.Science 309:1559-1563(2005).  
Lickliter J.D.,et al.Proc. Natl. Acad. Sci. U.S.A. 93:145-150(1996).  
Duffy S.L.,et al.Genesis 46:553-561(2008).

**Images**



Anti-(Mouse) Epha1 Antibody (Center) at 1:2000 dilution + A549 whole cell lysates Lysates/proteins at 20 µg per lane. Secondary Goat Anti-Rabbit IgG, (H+L), Peroxidase conjugated at 1/10000 dilution Predicted band size : 109 kDa Blocking/Dilution buffer: 5% NFDM/TBST.

Please note: All products are 'FOR RESEARCH USE ONLY. NOT FOR USE IN DIAGNOSTIC OR THERAPEUTIC PROCEDURES'.