

KDM6B Antibody (Center)

Purified Rabbit Polyclonal Antibody (Pab)

Catalog # AP21160a

Product Information

Application	WB, E
Primary Accession	O15054
Reactivity	Mouse
Host	Rabbit
Clonality	polyclonal
Isotype	Rabbit IgG
Clone Names	RB51280
Calculated MW	176632

Additional Information

Gene ID	23135
Other Names	Lysine-specific demethylase 6B, 11411-, JmjC domain-containing protein 3, Jumonji domain-containing protein 3, Lysine demethylase 6B, KDM6B, JMJD3, KIAA0346
Target/Specificity	This KDM6B antibody is generated from a rabbit immunized with a KLH conjugated synthetic peptide between 879-912 amino acids from the Central region of human KDM6B.
Dilution	WB~~1:2000 E~~Use at an assay dependent concentration.
Format	Purified polyclonal antibody supplied in PBS with 0.05% (V/V) Proclin 300. This antibody is prepared by Saturated Ammonium Sulfate (SAS) precipitation followed by dialysis against PBS.
Storage	Maintain refrigerated at 2-8°C for up to 2 weeks. For long term storage store at -20°C in small aliquots to prevent freeze-thaw cycles.
Precautions	KDM6B Antibody (Center) is for research use only and not for use in diagnostic or therapeutic procedures.

Protein Information

Name	KDM6B
Synonyms	JMJD3, KIAA0346
Function	Histone demethylase that specifically demethylates 'Lys-27' of histone H3, thereby playing a central role in histone code (PubMed: 17713478 ,

PubMed:[17825402](#), PubMed:[17851529](#), PubMed:[18003914](#)). Demethylates trimethylated and dimethylated H3 'Lys-27' (PubMed:[17713478](#), PubMed:[17825402](#), PubMed:[17851529](#), PubMed:[18003914](#)). Plays a central role in regulation of posterior development, by regulating HOX gene expression (PubMed:[17851529](#)). Involved in inflammatory response by participating in macrophage differentiation in case of inflammation by regulating gene expression and macrophage differentiation (PubMed:[17825402](#)). Plays a demethylase-independent role in chromatin remodeling to regulate T-box family member-dependent gene expression by acting as a link between T-box factors and the SMARCA4- containing SWI/SNF remodeling complex (By similarity).

Cellular Location

Nucleus.

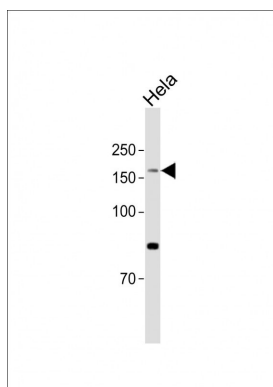
Background

Histone demethylase that specifically demethylates 'Lys- 27' of histone H3, thereby playing a central role in histone code. Demethylates trimethylated and dimethylated H3 'Lys-27'. Plays a central role in regulation of posterior development, by regulating HOX gene expression. Involved in inflammatory response by participating in macrophage differentiation in case of inflammation by regulating gene expression and macrophage differentiation.

References

Nagase T.,et al.DNA Res. 4:141-150(1997).
Nakajima D.,et al.DNA Res. 9:99-106(2002).
Zody M.C.,et al.Nature 440:1045-1049(2006).
Hu L.Y.,et al.Gene Expr. 13:179-189(2006).
De Santa F.,et al.Cell 130:1083-1094(2007).

Images



All lanes: Anti-KDM6B Antibody (Center) at 1:1000 dilution + HeLa whole cell lysate Lysates/proteins at 20 µg per lane. Secondary: Goat Anti-Rabbit IgG, (H+L), Peroxidase conjugated (ASP1615) at 1/15000 dilution. Observed band size: 177 KDa Blocking/Dilution buffer: 5% NFD/MTBST.

Please note: All products are 'FOR RESEARCH USE ONLY. NOT FOR USE IN DIAGNOSTIC OR THERAPEUTIC PROCEDURES'.