

(DANRE) Eva1a Antibody (Center)

Purified Rabbit Polyclonal Antibody (Pab)

Catalog # AP21171a

Product Information

Application	WB, E
Primary Accession	Q08CB3
Reactivity	Human, Zebrafish, Mouse
Host	Rabbit
Clonality	polyclonal
Isotype	Rabbit IgG
Clone Names	RB51996
Calculated MW	17374

Additional Information

Gene ID	767647
Other Names	Protein eva-1 homolog A, Protein FAM176A, Transmembrane protein 166, Eva1a, fam176a, tmem166
Target/Specificity	This DANRE Eva1a antibody is generated from a rabbit immunized with a KLH conjugated synthetic peptide between 104-137 amino acids from the Central region of DANREEva1a.
Dilution	WB~~1:1000 E~~Use at an assay dependent concentration.
Format	Purified polyclonal antibody supplied in PBS with 0.09% (W/V) sodium azide. This antibody is purified through a protein A column, followed by peptide affinity purification.
Storage	Maintain refrigerated at 2-8°C for up to 2 weeks. For long term storage store at -20°C in small aliquots to prevent freeze-thaw cycles.
Precautions	(DANRE) Eva1a Antibody (Center) is for research use only and not for use in diagnostic or therapeutic procedures.

Protein Information

Name	Eva1a
Synonyms	fam176a, tmem166
Function	Acts as a regulator of programmed cell death, mediating both autophagy and apoptosis.

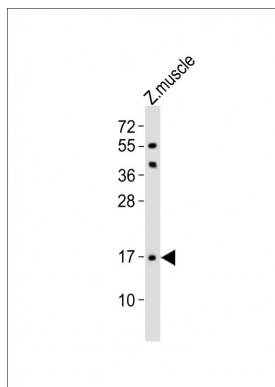
Cellular Location

Endoplasmic reticulum membrane; Single-pass membrane protein. Lysosome membrane; Single-pass membrane protein

Background

Acts as a regulator of programmed cell death, mediating both autophagy and apoptosis.

Images



Anti-(DANRE) Eva1a Antibody (Center) at 1:1000 dilution + zebrafish muscle lysates Lysates/proteins at 20 µg per lane. Secondary Goat Anti-Rabbit IgG, (H+L), Peroxidase conjugated at 1/10000 dilution Predicted band size : 17 kDa Blocking/Dilution buffer: 5% NFDM/TBST.

Please note: All products are 'FOR RESEARCH USE ONLY. NOT FOR USE IN DIAGNOSTIC OR THERAPEUTIC PROCEDURES'.