

# SPTAN1 Antibody (Center)

Purified Rabbit Polyclonal Antibody (Pab)

Catalog # AP21186c

## Product Information

---

<b>Application</b>	WB, E
<b>Primary Accession</b>	<a href="#">Q13813</a>
<b>Reactivity</b>	Human, Mouse, Rat
<b>Host</b>	Rabbit
<b>Clonality</b>	polyclonal
<b>Isotype</b>	Rabbit IgG
<b>Clone Names</b>	RB50708
<b>Calculated MW</b>	284539

## Additional Information

---

<b>Gene ID</b>	6709
<b>Other Names</b>	Spectrin alpha chain, non-erythrocytic 1, Alpha-II spectrin, Fodrin alpha chain, Spectrin, non-erythroid alpha subunit, SPTAN1, NEAS, SPTA2
<b>Target/Specificity</b>	This SPTAN1 antibody is generated from a rabbit immunized with a KLH conjugated synthetic peptide between 977-991 amino acids from the Central region of human SPTAN1.
<b>Dilution</b>	WB~~1:2000 E~~Use at an assay dependent concentration.
<b>Format</b>	Purified polyclonal antibody supplied in PBS with 0.05% (V/V) Proclin 300. This antibody is purified through a protein A column, followed by peptide affinity purification.
<b>Storage</b>	Maintain refrigerated at 2-8°C for up to 2 weeks. For long term storage store at -20°C in small aliquots to prevent freeze-thaw cycles.
<b>Precautions</b>	SPTAN1 Antibody (Center) is for research use only and not for use in diagnostic or therapeutic procedures.

## Protein Information

---

<b>Name</b>	SPTAN1
<b>Synonyms</b>	NEAS, SPTA2
<b>Function</b>	Fodrin, which seems to be involved in secretion, interacts with calmodulin in a calcium-dependent manner and is thus candidate for the calcium-dependent movement of the cytoskeleton at the membrane.

## Cellular Location

Cytoplasm, cytoskeleton. Cytoplasm, cell cortex. Note=Expressed along the cell membrane in podocytes and presumptive tubule cells during glomerulogenesis and is expressed along lateral cell margins in tubule cells.

## Background

---

Fodrin, which seems to be involved in secretion, interacts with calmodulin in a calcium-dependent manner and is thus candidate for the calcium-dependent movement of the cytoskeleton at the membrane.

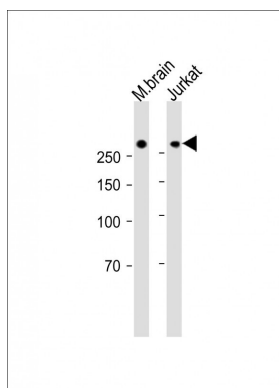
## References

---

Moon R.T.,et al.J. Biol. Chem. 265:4427-4433(1990).  
Cianci C.D.,et al.Biochemistry 38:15721-15730(1999).  
Kato S.,et al.Submitted (SEP-2004) to the EMBL/GenBank/DDBJ databases.  
Totoki Y.,et al.Submitted (MAR-2005) to the EMBL/GenBank/DDBJ databases.  
Humphray S.J.,et al.Nature 429:369-374(2004).

## Images

---



All lanes: Anti-SPTAN1 Antibody (Center) at 1:2000 dilution  
Lane 1: Mouse brain lysate  
Lane 2: Jurkat whole cell lysate  
Lysates/proteins at 20 µg per lane. Secondary: Goat Anti-Rabbit IgG, (H+L), Peroxidase conjugated (ASP1615) at 1/15000 dilution. Observed band size: 284 KDa  
Blocking/Dilution buffer: 5% NFDM/TBST.

Please note: All products are 'FOR RESEARCH USE ONLY. NOT FOR USE IN DIAGNOSTIC OR THERAPEUTIC PROCEDURES'.