

AMPH Antibody (Center)

Purified Rabbit Polyclonal Antibody (Pab)

Catalog # AP21189c

Product Information

Application	WB, IHC-P, E
Primary Accession	P49418
Reactivity	Human, Rat, Mouse
Host	Rabbit
Clonality	polyclonal
Isotype	Rabbit IgG
Clone Names	RB51675
Calculated MW	76257

Additional Information

Gene ID	273
Other Names	Amphiphysin, AMPH, AMPH1
Target/Specificity	This AMPH antibody is generated from a rabbit immunized with a KLH conjugated synthetic peptide between 336-370 amino acids from the Central region of human AMPH.
Dilution	WB~~1:1000 IHC-P~~1:100~500 E~~Use at an assay dependent concentration.
Format	Purified polyclonal antibody supplied in PBS with 0.09% (W/V) sodium azide. This antibody is purified through a protein A column, followed by peptide affinity purification.
Storage	Maintain refrigerated at 2-8°C for up to 2 weeks. For long term storage store at -20°C in small aliquots to prevent freeze-thaw cycles.
Precautions	AMPH Antibody (Center) is for research use only and not for use in diagnostic or therapeutic procedures.

Protein Information

Name	AMPH
Synonyms	AMPH1
Function	May participate in mechanisms of regulated exocytosis in synapses and certain endocrine cell types. May control the properties of the membrane associated cytoskeleton.

Cellular Location	Cytoplasmic vesicle, secretory vesicle, synaptic vesicle membrane; Peripheral membrane protein; Cytoplasmic side Cytoplasm, cytoskeleton
Tissue Location	Neurons, certain endocrine cell types and spermatocytes

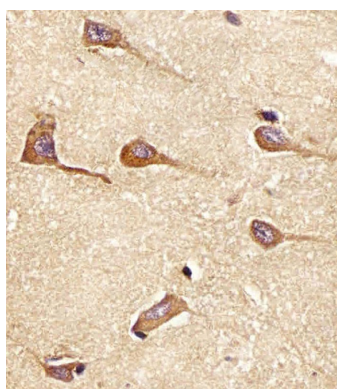
Background

May participate in mechanisms of regulated exocytosis in synapses and certain endocrine cell types. May control the properties of the membrane associated cytoskeleton.

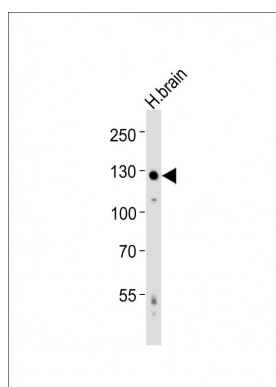
References

David C.,et al.FEBS Lett. 351:73-79(1994).
Yamamoto R.,et al.Hum. Mol. Genet. 4:265-268(1995).
Floyd S.R.,et al.Mol. Med. 4:29-39(1998).
Scherer S.W.,et al.Science 300:767-772(2003).
Mural R.J.,et al.Submitted (JUL-2005) to the EMBL/GenBank/DDBJ databases.

Images



AP21189c staining AMPH in Human brain tissue sections by Immunohistochemistry (IHC-P - paraformaldehyde-fixed, paraffin-embedded sections). Tissue was fixed with formaldehyde and blocked with 3% BSA for 0.5 hour at room temperature; antigen retrieval was by heat mediation with a citrate buffer (pH6). Samples were incubated with primary antibody (1/25) for 1 hour at 37°C. A undiluted biotinylated goat polyvalent antibody was used as the secondary antibody.



Anti-AMPH Antibody (Center) at 1:1000 dilution + human brain lysates Lysates/proteins at 20 µg per lane. Secondary Goat Anti-Rabbit IgG, (H+L), Peroxidase conjugated at 1/10000 dilution Predicted band size : 76 kDa Blocking/Dilution buffer: 5% NFDM/TBST.

Please note: All products are 'FOR RESEARCH USE ONLY. NOT FOR USE IN DIAGNOSTIC OR THERAPEUTIC PROCEDURES'.