

UBE2L6 Antibody (N-term)

Purified Rabbit Polyclonal Antibody (Pab)

Catalog # AP2118a

Product Information

Application	IHC-P, WB, E
Primary Accession	O14933
Other Accession	NP_937826
Reactivity	Human
Host	Rabbit
Clonality	Polyclonal
Isotype	Rabbit IgG
Calculated MW	17769
Antigen Region	1-30

Additional Information

Gene ID	9246
Other Names	Ubiquitin/ISG15-conjugating enzyme E2 L6, Retinoic acid-induced gene B protein, RIG-B, Ubch8, Ubiquitin carrier protein L6, Ubiquitin-protein ligase L6, UBE2L6, UBCH8
Target/Specificity	This UBE2L6 antibody is generated from rabbits immunized with a KLH conjugated synthetic peptide between 1-30 amino acids from the N-terminal region of human UBE2L6.
Dilution	IHC-P~~1:100~500 WB~~1:1000 E~~Use at an assay dependent concentration.
Format	Purified polyclonal antibody supplied in PBS with 0.09% (W/V) sodium azide. This antibody is prepared by Saturated Ammonium Sulfate (SAS) precipitation followed by dialysis against PBS.
Storage	Maintain refrigerated at 2-8°C for up to 2 weeks. For long term storage store at -20°C in small aliquots to prevent freeze-thaw cycles.
Precautions	UBE2L6 Antibody (N-term) is for research use only and not for use in diagnostic or therapeutic procedures.

Protein Information

Name	UBE2L6
Synonyms	UBCH8
Function	Catalyzes the covalent attachment of ubiquitin or ISG15 to other proteins.

Functions in the E6/E6-AP-induced ubiquitination of p53/TP53. Promotes ubiquitination and subsequent proteasomal degradation of FLT3.

Tissue Location

Present in natural killer cells (at protein level).

Background

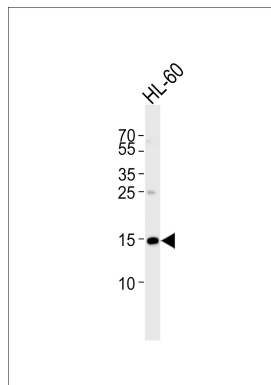
The modification of proteins with ubiquitin is an important cellular mechanism for targeting abnormal or short-lived proteins for degradation. Ubiquitination involves at least three classes of enzymes: ubiquitin-activating enzymes (E1s), ubiquitin-conjugating enzymes (E2s) and ubiquitin-protein ligases (E3s). UBE2L6 is a member of the E2 ubiquitin-conjugating enzyme family. This enzyme is demonstrated to function in the E6/E6-ap-induced ubiquitination of p53.

References

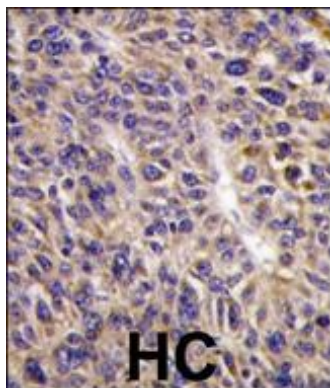
Kumar, S., et al., J. Biol. Chem. 272(21):13548-13554 (1997).

Ardley, H.C., et al., Cytogenet. Cell Genet. 89 (1-2), 137-140 (2000).

Images



Western blot analysis of lysate from HL-60 cell line, using UBE2L6 Antibody (M1) (Cat. #AP2118A). AP2118A was diluted at 1:1000. A goat anti-rabbit IgG H&L(HRP) at 1:5000 dilution was used as the secondary antibody. Lysate at 35ug.



Formalin-fixed and paraffin-embedded human hepatocarcinoma reacted with UBE2L6 Antibody (N-term)(Cat.#AP2118a), which was peroxidase-conjugated to the secondary antibody, followed by DAB staining. This data demonstrates the use of this antibody for immunohistochemistry; clinical relevance has not been evaluated.

Citations

- [Inhibition of UBE2L6 attenuates ISGylation and impedes ATRA-induced differentiation of leukemic cells](#)
- [Bortezomib Causes ER Stress-related Death of Acute Promyelocytic Leukemia Cells Through Excessive Accumulation of PML-RARA](#)
- [Interferon-induced ISG15 conjugation inhibits influenza A virus gene expression and replication in human cells](#)
- [TSA downregulates Wilms tumor gene 1 \(Wt1\) expression at multiple levels](#)

Please note: All products are 'FOR RESEARCH USE ONLY. NOT FOR USE IN DIAGNOSTIC OR THERAPEUTIC PROCEDURES'.