

# UBE2L6 Antibody (C-term)

Purified Rabbit Polyclonal Antibody (Pab)

Catalog # AP2118B

## Product Information

---

<b>Application</b>	IHC-P, WB, E
<b>Primary Accession</b>	<a href="#">O14933</a>
<b>Reactivity</b>	Human
<b>Host</b>	Rabbit
<b>Clonality</b>	Polyclonal
<b>Isotype</b>	Rabbit IgG
<b>Calculated MW</b>	17769
<b>Antigen Region</b>	123-153

## Additional Information

---

<b>Gene ID</b>	9246
<b>Other Names</b>	Ubiquitin/ISG15-conjugating enzyme E2 L6, Retinoic acid-induced gene B protein, RIG-B, Ubch8, Ubiquitin carrier protein L6, Ubiquitin-protein ligase L6, UBE2L6, UBCH8
<b>Target/Specificity</b>	This UBE2L6 antibody is generated from rabbits immunized with a KLH conjugated synthetic peptide between 123-153 amino acids from the C-terminal region of human UBE2L6.
<b>Dilution</b>	IHC-P~~1:100~500 WB~~1:1000 E~~Use at an assay dependent concentration.
<b>Format</b>	Purified polyclonal antibody supplied in PBS with 0.09% (W/V) sodium azide. This antibody is prepared by Saturated Ammonium Sulfate (SAS) precipitation followed by dialysis against PBS.
<b>Storage</b>	Maintain refrigerated at 2-8°C for up to 2 weeks. For long term storage store at -20°C in small aliquots to prevent freeze-thaw cycles.
<b>Precautions</b>	UBE2L6 Antibody (C-term) is for research use only and not for use in diagnostic or therapeutic procedures.

## Protein Information

---

<b>Name</b>	UBE2L6
<b>Synonyms</b>	UBCH8
<b>Function</b>	Catalyzes the covalent attachment of ubiquitin or ISG15 to other proteins. Functions in the E6/E6-AP-induced ubiquitination of p53/TP53. Promotes

ubiquitination and subsequent proteasomal degradation of FLT3.

## Tissue Location

Present in natural killer cells (at protein level).

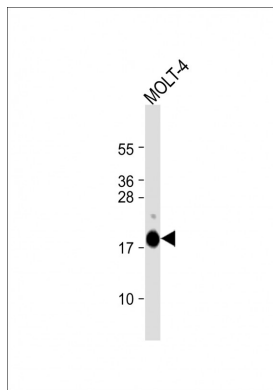
## Background

The modification of proteins with ubiquitin is an important cellular mechanism for targeting abnormal or short-lived proteins for degradation. Ubiquitination involves at least three classes of enzymes: ubiquitin-activating enzymes (E1s), ubiquitin-conjugating enzymes (E2s) and ubiquitin-protein ligases (E3s). UBE2L6 is a member of the E2 ubiquitin-conjugating enzyme family. This enzyme is demonstrated to function in the E6/E6-ap-induced ubiquitination of p53.

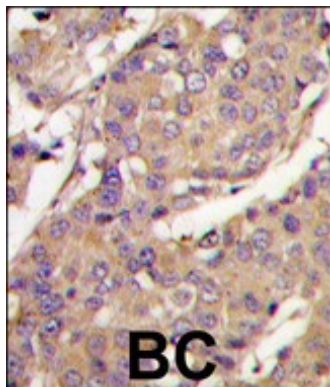
## References

Kumar, S., et al., J. Biol. Chem. 272(21):13548-13554 (1997). Ardley, H.C., et al., Cytogenet. Cell Genet. 89 (1-2), 137-140 (2000).

## Images



Anti-UBE2L6 Antibody (K136) at 1:1000 dilution + MOLT-4 whole cell lysate Lysates/proteins at 20 µg per lane. Secondary Goat Anti-Rabbit IgG, (H+L), Peroxidase conjugated at 1/10000 dilution. Predicted band size : 18 kDa Blocking/Dilution buffer: 5% NFDM/TBST.



Formalin-fixed and paraffin-embedded breast carcinoma tissue reacted with UBE2L6 Antibody (C-term)(Cat.#AP2118b), which was peroxidase-conjugated to the secondary antibody, followed by DAB staining. This data demonstrates the use of this antibody for immunohistochemistry; clinical relevance has not been evaluated.

## Citations

- [STAT1 N-terminal domain discriminatively controls type I and type II IFN signaling](#)
- [Influenza B virus non-structural protein 1 counteracts ISG15 antiviral activity by sequestering ISGylated viral proteins.](#)
- [Differential regulation of PML-RAR  \$\alpha\$  stability by the ubiquitin ligases SIAH1/SIAH2 and TRIAD1.](#)
- [Mechanism for ubiquitylation of the leukemia fusion proteins AML1-ETO and PML-RAR \$\alpha\$ .](#)