

(DANRE) sog3b Antibody (C-Term)

Purified Rabbit Polyclonal Antibody (Pab)

Catalog # AP21191b

Product Information

Application	WB, E
Primary Accession	B3DIQ0
Reactivity	Zebrafish
Host	Rabbit
Clonality	polyclonal
Isotype	Rabbit IgG
Clone Names	RB52026
Antigen Region	198-229

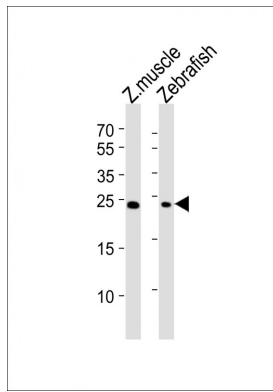
Additional Information

Target/Specificity	This DANRE sog3b antibody is generated from a rabbit immunized with a KLH conjugated synthetic peptide between 198-229 amino acids from DANRE sog3b.
Dilution	WB~~1:2000 E~~Use at an assay dependent concentration.
Format	Purified polyclonal antibody supplied in PBS with 0.09% (W/V) sodium azide. This antibody is purified through a protein A column, followed by peptide affinity purification.
Storage	Maintain refrigerated at 2-8°C for up to 2 weeks. For long term storage store at -20°C in small aliquots to prevent freeze-thaw cycles.
Precautions	(DANRE) sog3b Antibody (C-Term) is for research use only and not for use in diagnostic or therapeutic procedures.

Protein Information

Images

All lanes : Anti-sog3b Antibody (C-Term) at 1:2000 dilution Lane 1: Zebrafish muscle lysates Lane 2: Zebrafish lysates Lysates/proteins at 20 µg per lane. Secondary Goat Anti-Rabbit IgG, (H+L), Peroxidase conjugated at 1/10000 dilution Predicted band size : 22 kDa Blocking/Dilution buffer: 5% NFDM/TBST.



Please note: All products are 'FOR RESEARCH USE ONLY. NOT FOR USE IN DIAGNOSTIC OR THERAPEUTIC PROCEDURES'.