

(DANRE) gabarapl2 Antibody (N-term)

Purified Rabbit Polyclonal Antibody (Pab)

Catalog # AP21195a

Product Information

Application	WB, E
Primary Accession	Q6TH05
Reactivity	Human, Zebrafish, Mouse
Host	Rabbit
Clonality	polyclonal
Isotype	Rabbit IgG
Clone Names	RB52003
Calculated MW	13711

Additional Information

Gene ID	403036
Target/Specificity	This DANRE gabarapl2 antibody is generated from a rabbit immunized with a KLH conjugated synthetic peptide between 15-48 amino acids from the N-terminal region of DANRE gabarapl2.
Dilution	WB~~1:2000 E~~Use at an assay dependent concentration.
Format	Purified polyclonal antibody supplied in PBS with 0.09% (W/V) sodium azide. This antibody is purified through a protein A column, followed by peptide affinity purification.
Storage	Maintain refrigerated at 2-8°C for up to 2 weeks. For long term storage store at -20°C in small aliquots to prevent freeze-thaw cycles.
Precautions	(DANRE) gabarapl2 Antibody (N-term) is for research use only and not for use in diagnostic or therapeutic procedures.

Protein Information

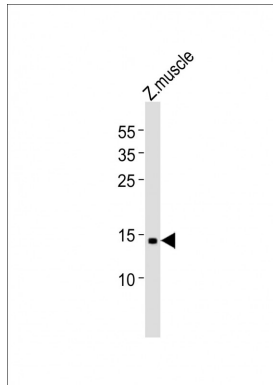
Name	Q6TH05
Function	Ubiquitin-like modifier involved in intra-Golgi traffic. Modulates intra-Golgi transport through coupling between NSF activity and SNAREs activation. It first stimulates the ATPase activity of NSF which in turn stimulates the association with GOSR1. Involved in autophagy. Plays a role in mitophagy which contributes to regulate mitochondrial quantity and quality by eliminating the mitochondria to a basal level to fulfill cellular energy requirements and preventing excess ROS production. Whereas LC3s are involved in elongation of the phagophore membrane, the GABARAP/GATE-16

subfamily is essential for a later stage in autophagosome maturation.

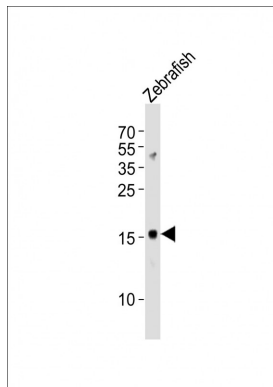
Cellular Location

Cytoplasmic vesicle, autophagosome {ECO:0000256 | ARBA:ARBA00004419}.
Endoplasmic reticulum membrane {ECO:0000256 | ARBA:ARBA00004586}.
Golgi apparatus {ECO:0000256 | ARBA:ARBA00004555}

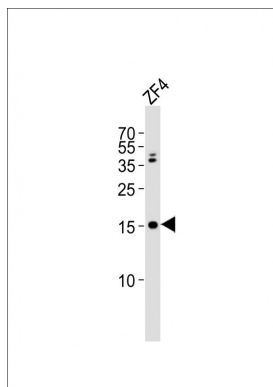
Images



Anti-gabarapl2 Antibody (N-term) at 1:500 dilution + Zebrafish muscle lysates Lysates/proteins at 20 µg per lane. Secondary Goat Anti-Rabbit IgG, (H+L), Peroxidase conjugated at 1/10000 dilution Predicted band size : 14 kDa Blocking/Dilution buffer: 5% NFDM/TBST.



Anti-gabarapl2 Antibody (N-term) at 1:1000 dilution + Zebrafish lysates Lysates/proteins at 20 µg per lane. Secondary Goat Anti-Rabbit IgG, (H+L), Peroxidase conjugated at 1/10000 dilution Predicted band size : 14 kDa Blocking/Dilution buffer: 5% NFDM/TBST.



Anti-gabarapl2 Antibody (N-term) at 1:2000 dilution + ZF4 whole cell lysates Lysates/proteins at 20 µg per lane. Secondary Goat Anti-Rabbit IgG, (H+L), Peroxidase conjugated at 1/10000 dilution Predicted band size : 14 kDa Blocking/Dilution buffer: 5% NFDM/TBST.

Please note: All products are 'FOR RESEARCH USE ONLY. NOT FOR USE IN DIAGNOSTIC OR THERAPEUTIC PROCEDURES'.