

NPY2R Antibody (N-term)

Purified Rabbit Polyclonal Antibody (Pab)

Catalog # AP21198a

Product Information

Application	WB, IHC, FC, E
Primary Accession	P49146
Reactivity	Human, Rat, Mouse
Host	Rabbit
Clonality	polyclonal
Isotype	Rabbit IgG
Clone Names	RB52203
Calculated MW	42731

Additional Information

Gene ID	4887
Other Names	Neuropeptide Y receptor type 2, NPY2-R, NPY-Y2 receptor, Y2 receptor, NPY2R
Target/Specificity	This NPY2R antibody is generated from a rabbit immunized with a KLH conjugated synthetic peptide between 29-65 amino acids from the N-terminal region of human NPY2R.
Dilution	WB~~1:1000 IHC~~1:100~500 FC~~1:25 E~~Use at an assay dependent concentration.
Format	Purified polyclonal antibody supplied in PBS with 0.09% (W/V) sodium azide. This antibody is purified through a protein A column, followed by peptide affinity purification.
Storage	Maintain refrigerated at 2-8°C for up to 2 weeks. For long term storage store at -20°C in small aliquots to prevent freeze-thaw cycles.
Precautions	NPY2R Antibody (N-term) is for research use only and not for use in diagnostic or therapeutic procedures.

Protein Information

Name	NPY2R
Function	Receptor for neuropeptide Y and peptide YY. The rank order of affinity of this receptor for pancreatic polypeptides is PYY > NPY > PYY (3-36) > NPY (2-36) > [Ile-31, Gln-34] PP > [Leu-31, Pro-34] NPY > PP, [Pro-34] PYY and NPY free acid.

Cellular Location

Cell membrane; Multi-pass membrane protein.

Tissue Location

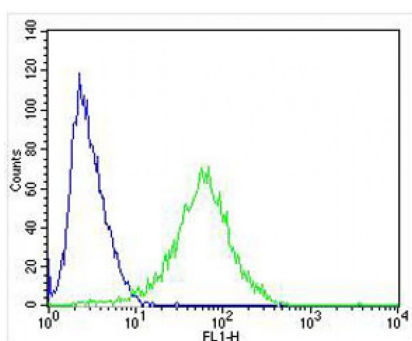
High levels in amygdala, corpus callosum, hippocampus and subthalamic nucleus. Also detectable in caudate nucleus, hypothalamus and substantia nigra

Background

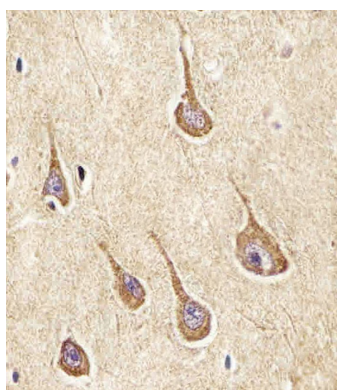
Receptor for neuropeptide Y and peptide YY. The rank order of affinity of this receptor for pancreatic polypeptides is PYY > NPY > PYY (3-36) > NPY (2-36) > [Ile-31, Gln-34] PP > [Leu- 31, Pro-34] NPY > PP, [Pro-34] PYY and NPY free acid.

References

Gerald C., et al. J. Biol. Chem. 270:26758-26761(1995).
Gehlert D.R., et al. Mol. Pharmacol. 49:224-228(1996).
Rose P.M., et al. J. Biol. Chem. 270:22661-22664(1995).
Yan H., et al. Proc. Natl. Acad. Sci. U.S.A. 93:4661-4665(1996).
Ammar D.A., et al. Genomics 38:392-398(1996).

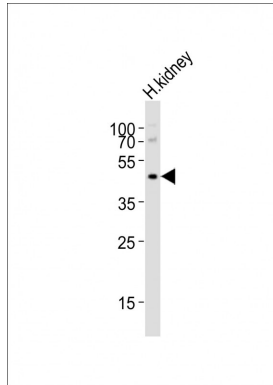
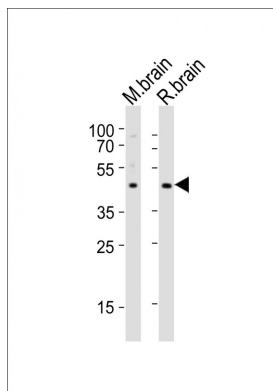
Images

Overlay histogram showing SH-SY5Y cells stained with AP21198a (green line). The cells were fixed with 4% paraformaldehyde (10 min) and then permeabilized with 90% methanol for 10 min. The cells were then incubated in 2% bovine serum albumin to block non-specific protein-protein interactions followed by the antibody (, 1:25 dilution) for 60 min at 37°C. The secondary antibody used was Alexa Fluor® 488 goat anti-rabbit IgG (H+L) (1583138) at 1/400 dilution for 40 min at 37°C. Isotype control antibody (blue line) was rabbit IgG1 (1µg/1x10⁶ cells) used under the same conditions. Acquisition of >10,000 events was performed.



AP21198a staining NPY2R in Human brain tissue sections by Immunohistochemistry (IHC-P - paraformaldehyde-fixed, paraffin-embedded sections). Tissue was fixed with formaldehyde and blocked with 3% BSA for 0.5 hour at room temperature; antigen retrieval was by heat mediation with a citrate buffer (pH6). Samples were incubated with primary antibody (1/25) for 1 hour at 37°C. A undiluted biotinylated goat polyvalent antibody was used as the secondary antibody.

All lanes : Anti-NPY2R Antibody (N-term) at 1:2000 dilution
Lane 1: mouse brain lysates
Lane 2: rat brain lysates
Lysates/proteins at 20 µg per lane. Secondary Goat Anti-Rabbit IgG, (H+L), Peroxidase conjugated at 1/10000 dilution
Predicted band size : 43 kDa
Blocking/Dilution buffer: 5% NFDM/TBST.



Anti-NPY2R Antibody (N-term) at 1:1000 dilution + human kidney lysates Lysates/proteins at 20 µg per lane. Secondary Goat Anti-Rabbit IgG, (H+L), Peroxidase conjugated at 1/10000 dilution Predicted band size : 43 kDa Blocking/Dilution buffer: 5% NFDM/TBST.

Please note: All products are 'FOR RESEARCH USE ONLY. NOT FOR USE IN DIAGNOSTIC OR THERAPEUTIC PROCEDURES'.