

# Mouse Ptk7 Antibody (C-term)

Purified Rabbit Polyclonal Antibody (Pab)

Catalog # AP21199b

## Product Information

---

<b>Application</b>	WB, E
<b>Primary Accession</b>	<a href="#">Q8BKG3</a>
<b>Reactivity</b>	Human, Mouse
<b>Host</b>	Rabbit
<b>Clonality</b>	polyclonal
<b>Isotype</b>	Rabbit IgG
<b>Clone Names</b>	RB50417
<b>Calculated MW</b>	117532

## Additional Information

---

<b>Gene ID</b>	71461
<b>Other Names</b>	Inactive tyrosine-protein kinase 7, Protein chuzhoi, Protein-tyrosine kinase 7, Pseudo tyrosine kinase receptor 7, Tyrosine-protein kinase-like 7, Ptk7
<b>Target/Specificity</b>	This mouse Ptk7 antibody is generated from a rabbit immunized with a KLH conjugated synthetic peptide between 722-757 amino acids from the C-terminal region of mouse Ptk7.
<b>Dilution</b>	WB~~1:500 E~~Use at an assay dependent concentration.
<b>Format</b>	Purified polyclonal antibody supplied in PBS with 0.09% (W/V) sodium azide. This antibody is purified through a protein A column, followed by peptide affinity purification.
<b>Storage</b>	Maintain refrigerated at 2-8°C for up to 2 weeks. For long term storage store at -20°C in small aliquots to prevent freeze-thaw cycles.
<b>Precautions</b>	Mouse Ptk7 Antibody (C-term) is for research use only and not for use in diagnostic or therapeutic procedures.

## Protein Information

---

<b>Name</b>	Ptk7
<b>Function</b>	Inactive tyrosine kinase involved in Wnt signaling pathway. Component of both the non-canonical (also known as the Wnt/planar cell polarity signaling) and the canonical Wnt signaling pathway. Functions in cell adhesion, cell migration, cell polarity, proliferation, actin cytoskeleton reorganization and apoptosis. Has a role in embryogenesis, epithelial tissue organization and

angiogenesis.

#### Cellular Location

Membrane; Single-pass type I membrane protein. Cell junction.  
Note=Colocalizes with MMP14 at cell junctions. Also localizes at the leading edge of migrating cells

#### Tissue Location

Expressed at high levels in lung and un-pregnant uterus among adult tissues, and in the tail, limbs, somites, gut and craniofacial regions among embryonic tissues

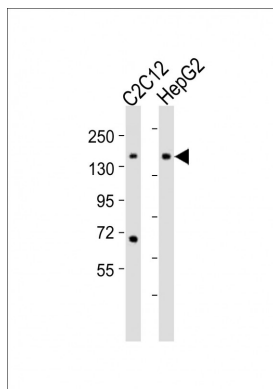
## Background

Inactive tyrosine kinase involved in Wnt signaling pathway. Component of both the non-canonical (also known as the Wnt/planar cell polarity signaling) and the canonical Wnt signaling pathway. Functions in cell adhesion, cell migration, cell polarity, proliferation, actin cytoskeleton reorganization and apoptosis. Has a role in embryogenesis, epithelial tissue organization and angiogenesis.

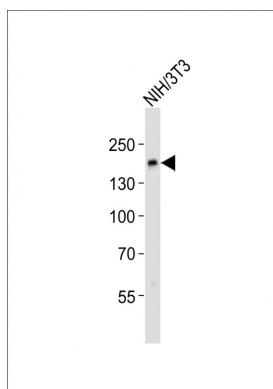
## References

Jung J.-W.,et al.Gene 328:75-84(2004).  
Carninci P.,et al.Science 309:1559-1563(2005).  
Daigo Y.,et al.Submitted (FEB-2001) to the EMBL/GenBank/DDBJ databases.  
Lu X.,et al.Nature 430:93-98(2004).  
Gundry R.L.,et al.Mol. Cell. Proteomics 8:2555-2569(2009).

## Images



All lanes : Anti-Ptk7 Antibody (C-term) at 1:2000 dilution  
Lane 1: C2C12 whole cell lysates Lane 2: HepG2 whole cell lysates  
Lysates/proteins at 20 µg per lane. Secondary Goat Anti-Rabbit IgG, (H+L), Peroxidase conjugated at 1/10000 dilution Predicted band size : 118 kDa  
Blocking/Dilution buffer: 5% NFDM/TBST.



Anti-Ptk7 Antibody (C-term) at 1:500 dilution + NIH/3T3 whole cell lysates  
Lysates/proteins at 20 µg per lane. Secondary Goat Anti-Rabbit IgG, (H+L), Peroxidase conjugated at 1/10000 dilution Predicted band size : 118 kDa  
Blocking/Dilution buffer: 5% NFDM/TBST.