

# (DANRE) tmem208 Antibody (Center)

Purified Rabbit Polyclonal Antibody (Pab)

Catalog # AP21214c

## Product Information

---

<b>Application</b>	WB, E
<b>Primary Accession</b>	<a href="#">Q6NYP0</a>
<b>Reactivity</b>	Human, Zebrafish, Mouse
<b>Host</b>	Rabbit
<b>Clonality</b>	polyclonal
<b>Isotype</b>	Rabbit IgG
<b>Clone Names</b>	RB52033
<b>Calculated MW</b>	20034

## Additional Information

---

<b>Gene ID</b>	404632
<b>Other Names</b>	Transmembrane protein 208, tmem208
<b>Target/Specificity</b>	This DANRE tmem208 antibody is generated from a rabbit immunized with a KLH conjugated synthetic peptide between 92-124 amino acids from the Central region of DANRE tmem208.
<b>Dilution</b>	WB~~1:2000 E~~Use at an assay dependent concentration.
<b>Format</b>	Purified polyclonal antibody supplied in PBS with 0.09% (W/V) sodium azide. This antibody is purified through a protein A column, followed by peptide affinity purification.
<b>Storage</b>	Maintain refrigerated at 2-8°C for up to 2 weeks. For long term storage store at -20°C in small aliquots to prevent freeze-thaw cycles.
<b>Precautions</b>	(DANRE) tmem208 Antibody (Center) is for research use only and not for use in diagnostic or therapeutic procedures.

## Protein Information

---

<b>Name</b>	tmem208
<b>Function</b>	May function as a negative regulator of endoplasmic reticulum-stress induced autophagy.
<b>Cellular Location</b>	Endoplasmic reticulum membrane {ECO:0000250 UniProtKB:Q9BTX3}; Multi-pass membrane protein

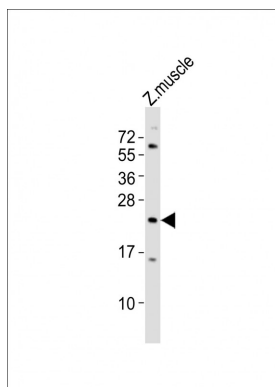
## Background

---

May function as a negative regulator of endoplasmic reticulum-stress induced autophagy.

## Images

---



Anti-tm208 Antibody (Center) at 1:2000 dilution + Zebrafish muscle lysates Lysates/proteins at 20 µg per lane. Secondary Goat Anti-Rabbit IgG, (H+L), Peroxidase conjugated at 1/10000 dilution Predicted band size : 20 kDa Blocking/Dilution buffer: 5% NFDM/TBST.

Please note: All products are 'FOR RESEARCH USE ONLY. NOT FOR USE IN DIAGNOSTIC OR THERAPEUTIC PROCEDURES'.