

# (Mouse) Shh Antibody (N-term)

Purified Rabbit Polyclonal Antibody (Pab)

Catalog # AP21229a

## Product Information

---

Application	FC, IHC-P, IF, WB, E
Primary Accession	<a href="#">Q62226</a>
Reactivity	Human, Rat, Mouse
Host	Rabbit
Clonality	polyclonal
Isotype	Rabbit IgG
Clone Names	RB52387
Calculated MW	47773

## Additional Information

---

Gene ID	20423
Target/Specificity	This mouse Shh antibody is generated from a rabbit immunized with a KLH conjugated synthetic peptide between 58-91 amino acids from the N-terminal region of mouse Shh.
Dilution	FC~~1:25 IHC-P~~1:100~500 IF~~1:25 WB~~1:2000 E~~Use at an assay dependent concentration.
Format	Purified polyclonal antibody supplied in PBS with 0.09% (W/V) sodium azide. This antibody is purified through a protein A column, followed by peptide affinity purification.
Storage	Maintain refrigerated at 2-8°C for up to 2 weeks. For long term storage store at -20°C in small aliquots to prevent freeze-thaw cycles.
Precautions	(Mouse) Shh Antibody (N-term) is for research use only and not for use in diagnostic or therapeutic procedures.

## Protein Information

---

Name	Shh {ECO:0000312   MGI:MGI:98297}
Synonyms	Hhg1
Function	[Sonic hedgehog protein]: The C-terminal part of the sonic hedgehog protein precursor displays an autoproteolysis and a cholesterol transferase activity (PubMed: <a href="#">7736596</a> , PubMed: <a href="#">7891723</a> , PubMed: <a href="#">8824192</a> ). Both activities result in the cleavage of the full- length protein into two parts (ShhN and ShhC) followed by the covalent attachment of a cholesterol moiety to the

C-terminal of the newly generated ShhN (PubMed:[8824192](#)). Both activities occur in the reticulum endoplasmic (PubMed:[21357747](#)). Once cleaved, ShhC is degraded in the endoplasmic reticulum (PubMed:[21357747](#)).

#### Cellular Location

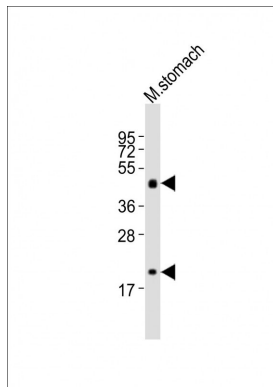
[Sonic hedgehog protein]: Endoplasmic reticulum membrane {ECO:0000250|UniProtKB:Q15465}. Golgi apparatus membrane {ECO:0000250|UniProtKB:Q15465}. Note=Co-localizes with HHAT in the ER and Golgi membrane. {ECO:0000250|UniProtKB:Q15465}

#### Tissue Location

Expressed in a number of embryonic tissues including the notochord, ventral neural tube, floor plate, lung bud, zone of polarizing activity and posterior distal mesenchyme of limbs In the adult, expressed in lung and neural retina

## Images

---



Anti-Shh Antibody (N-term) at 1:2000 dilution + mouse stomach lysates. Lysates/proteins at 20 µg per lane. Secondary Goat Anti-Rabbit IgG, (H+L), Peroxidase conjugated at 1/10000 dilution. Predicted band size : 48 kDa. Blocking/Dilution buffer: 5% NFDM/TBST.

Please note: All products are 'FOR RESEARCH USE ONLY. NOT FOR USE IN DIAGNOSTIC OR THERAPEUTIC PROCEDURES'.