

# IL24 Antibody

Purified Rabbit Polyclonal Antibody (Pab)  
Catalog # AP21241a

## Product Information

---

<b>Application</b>	WB, FC, IHC-P, E
<b>Primary Accession</b>	<a href="#">Q13007</a>
<b>Reactivity</b>	Human, Rat, Mouse
<b>Host</b>	Rabbit
<b>Clonality</b>	polyclonal
<b>Isotype</b>	Rabbit IgG
<b>Clone Names</b>	RB52609

## Additional Information

---

<b>Other Names</b>	Interleukin-24, IL-24, Melanoma differentiation-associated gene 7 protein, MDA-7, Suppression of tumorigenicity 16 protein, IL24, MDA7, ST16
<b>Target/Specificity</b>	This IL24 antibody is generated from a rabbit immunized with a recombinant protein.
<b>Dilution</b>	WB~~1:2000 FC~~1:25 IHC-P~~1:100~500 E~~Use at an assay dependent concentration.
<b>Format</b>	Purified polyclonal antibody supplied in PBS with 0.09% (W/V) sodium azide. This antibody is purified through a protein A column, followed by peptide affinity purification.
<b>Storage</b>	Maintain refrigerated at 2-8°C for up to 2 weeks. For long term storage store at -20°C in small aliquots to prevent freeze-thaw cycles.
<b>Precautions</b>	IL24 Antibody is for research use only and not for use in diagnostic or therapeutic procedures.

## Protein Information

---

### Background

---

Has antiproliferative properties on melanoma cells and may contribute to terminal cell differentiation.

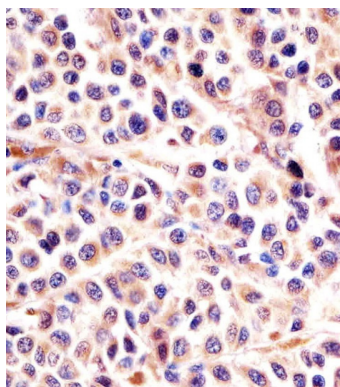
### References

---

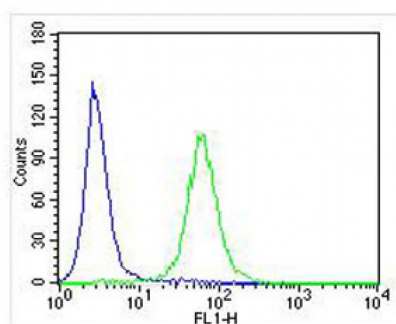
Jiang H.,et al.Oncogene 11:2477-2486(1995).  
Peat J.,et al.Submitted (JUN-2000) to the EMBL/GenBank/DDBJ databases.

Huang E.Y., et al. *Oncogene* 20:7051-7063(2001).  
 Allen M., et al. *J. Invest. Dermatol.* 123:583-588(2004).  
 Allen M., et al. *Int. J. Immunogenet.* 32:375-378(2005).

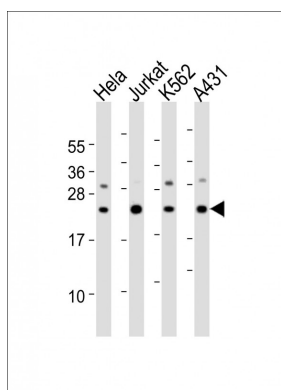
## Images



AP21241a staining IL24 in human melanoma sections by Immunohistochemistry (IHC-P - paraformaldehyde-fixed, paraffin-embedded sections). Tissue was fixed with formaldehyde and blocked with 3% BSA for 0.5 hour at room temperature; antigen retrieval was by heat mediation with a citrate buffer (pH6). Samples were incubated with primary antibody (1/25) for 1 hours at 37°C. A undiluted biotinylated goat polyvalent antibody was used as the secondary antibody.



Overlay histogram showing U-2 OS cells stained with AP21241a (green line). The cells were fixed with 2% paraformaldehyde (10 min) and then permeabilized with 90% methanol for 10 min. The cells were then incubated in 2% bovine serum albumin to block non-specific protein-protein interactions followed by the antibody (AP21241a, 1:25 dilution) for 60 min at 37°C. The secondary antibody used was Alexa Fluor® 488 goat anti-rabbit IgG (H+L) (1583138) at 1/400 dilution for 40 min at 37°C. Isotype control antibody (blue line) was rabbit IgG1 (1 µg/1x10<sup>6</sup> cells) used under the same conditions. Acquisition of >10,000 events was performed.



All lanes : Anti-IL24 Antibody at 1:2000 dilution  
 Lane 1: HeLa whole cell lysates  
 Lane 2: Jurkat whole cell lysates  
 Lane 3: K562 whole cell lysates  
 Lane 4: A431 whole cell lysates  
 Lysates/proteins at 20 µg per lane. Secondary Goat Anti-Rabbit IgG, (H+L), Peroxidase conjugated at 1/10000 dilution  
 Predicted band size : 24 kDa  
 Blocking/Dilution buffer: 5% NFD/MTBST.

Please note: All products are 'FOR RESEARCH USE ONLY. NOT FOR USE IN DIAGNOSTIC OR THERAPEUTIC PROCEDURES'.