

# (Mouse) Suz12 Antibody (Center)

Purified Rabbit Polyclonal Antibody (Pab)

Catalog # AP21242c

## Product Information

---

<b>Application</b>	WB, IHC-P, E
<b>Primary Accession</b>	<a href="#">Q80U70</a>
<b>Reactivity</b>	Human, Mouse
<b>Host</b>	Rabbit
<b>Clonality</b>	polyclonal
<b>Isotype</b>	Rabbit IgG
<b>Clone Names</b>	RB52373
<b>Calculated MW</b>	83026

## Additional Information

---

<b>Gene ID</b>	52615
<b>Other Names</b>	Polycomb protein Suz12, Suppressor of zeste 12 protein homolog, Suz12, D11Ert530e, Kiaa0160
<b>Target/Specificity</b>	This mouse Suz12 antibody is generated from a rabbit immunized with a KLH conjugated synthetic peptide between 381-395 amino acids from the Central region of mouse Suz12.
<b>Dilution</b>	WB~~1:2000 IHC-P~~1:100~500 E~~Use at an assay dependent concentration.
<b>Format</b>	Purified polyclonal antibody supplied in PBS with 0.09% (W/V) sodium azide. This antibody is purified through a protein A column, followed by peptide affinity purification.
<b>Storage</b>	Maintain refrigerated at 2-8°C for up to 2 weeks. For long term storage store at -20°C in small aliquots to prevent freeze-thaw cycles.
<b>Precautions</b>	(Mouse) Suz12 Antibody (Center) is for research use only and not for use in diagnostic or therapeutic procedures.

## Protein Information

---

<b>Name</b>	Suz12
<b>Synonyms</b>	D11Ert530e, Kiaa0160
<b>Function</b>	Polycomb group (PcG) protein. Component of the PRC2/EED-EZH2 complex, which methylates 'Lys-9' (H3K9me) and 'Lys-27' (H3K27me) of histone H3, leading to transcriptional repression of the affected target gene. The

PRC2/EED-EZH2 complex may also serve as a recruiting platform for DNA methyltransferases, thereby linking two epigenetic repression systems (By similarity). Genes repressed by the PRC2/EED- EZH2 complex include HOXA7, HOXB6 and HOXC8.

<b>Cellular Location</b>	Nucleus. Chromosome. Note=Localizes to the inactive X chromosome in trophoblast stem cells
<b>Tissue Location</b>	Expressed in embryonic stem cells.

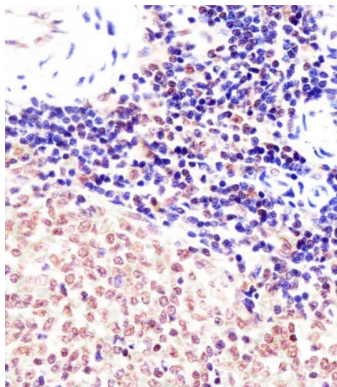
## Background

Polycomb group (PcG) protein. Component of the PRC2/EED- EZH2 complex, which methylates 'Lys-9' (H3K9me) and 'Lys-27' (H3K27me) of histone H3, leading to transcriptional repression of the affected target gene. The PRC2/EED-EZH2 complex may also serve as a recruiting platform for DNA methyltransferases, thereby linking two epigenetic repression systems (By similarity). Genes repressed by the PRC2/EED-EZH2 complex include HOXA7, HOXB6 and HOXC8.

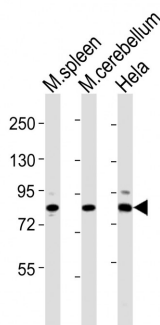
## References

- Okazaki N.,et al.DNA Res. 10:35-48(2003).  
Church D.M.,et al.PLoS Biol. 7:E1000112-E1000112(2009).  
Pasini D.,et al.EMBO J. 23:4061-4071(2004).  
Umlauf D.,et al.Nat. Genet. 36:1296-1300(2004).  
Kuzmichev A.,et al.Proc. Natl. Acad. Sci. U.S.A. 102:1859-1864(2005).

## Images



AP21242c staining (Mouse) Suz12 in mouse spleen sections by Immunohistochemistry (IHC-P - paraformaldehyde-fixed, paraffin-embedded sections). Tissue was fixed with formaldehyde and blocked with 3% BSA for 0.5 hour at room temperature; antigen retrieval was by heat mediation with a citrate buffer (pH6). Samples were incubated with primary antibody (1/25) for 1 hour at 37°C. A undiluted biotinylated goat polyvalent antibody was used as the secondary antibody.



All lanes : Anti-Suz12 Antibody (Center) at 1:2000 dilution  
Lane 1: mouse spleen lysates Lane 2: mouse cerebellum lysates Lane 3: HeLa whole cell lysates  
Lysates/proteins at 20 µg per lane. Secondary Goat Anti-Rabbit IgG, (H+L), Peroxidase conjugated at 1/10000 dilution  
Predicted band size : 83 kDa  
Blocking/Dilution buffer: 5% NFDN/TBST.