

# Mouse Yes1 Antibody (Center)

Purified Rabbit Polyclonal Antibody (Pab)

Catalog # AP21248c

## Product Information

---

<b>Application</b>	WB, E
<b>Primary Accession</b>	<a href="#">Q04736</a>
<b>Reactivity</b>	Human, Rat, Mouse
<b>Host</b>	Rabbit
<b>Clonality</b>	polyclonal
<b>Isotype</b>	Rabbit IgG
<b>Clone Names</b>	RB50491
<b>Calculated MW</b>	60630

## Additional Information

---

<b>Gene ID</b>	22612
<b>Other Names</b>	Tyrosine-protein kinase Yes, Proto-oncogene c-Yes, p61-Yes, Yes1, Yes
<b>Target/Specificity</b>	This Mouse Yes1 antibody is generated from a rabbit immunized with a KLH conjugated synthetic peptide between 148-182 amino acids from the Central region of Mouse Yes1.
<b>Dilution</b>	WB~~1:2000 E~~Use at an assay dependent concentration.
<b>Format</b>	Purified polyclonal antibody supplied in PBS with 0.05% (V/V) Proclin 300. This antibody is prepared by Saturated Ammonium Sulfate (SAS) precipitation followed by dialysis against PBS.
<b>Storage</b>	Maintain refrigerated at 2-8°C for up to 2 weeks. For long term storage store at -20°C in small aliquots to prevent freeze-thaw cycles.
<b>Precautions</b>	Mouse Yes1 Antibody (Center) is for research use only and not for use in diagnostic or therapeutic procedures.

## Protein Information

---

<b>Name</b>	Yes1
<b>Synonyms</b>	Yes
<b>Function</b>	Non-receptor protein tyrosine kinase that is involved in the regulation of cell growth and survival, apoptosis, cell-cell adhesion, cytoskeleton remodeling, and differentiation. Stimulation by receptor tyrosine kinases (RTKs) including EGFR, PDGFR, CSF1R and FGFR leads to recruitment of YES1 to

the phosphorylated receptor, and activation and phosphorylation of downstream substrates. Upon EGFR activation, promotes the phosphorylation of PARD3 to favor epithelial tight junction assembly. Participates in the phosphorylation of specific junctional components such as CTNND1 by stimulating the FYN and FER tyrosine kinases at cell-cell contacts. Upon T-cell stimulation by CXCL12, phosphorylates collapsin response mediator protein 2/DPYSL2 and induces T-cell migration. Participates in CD95L/FASLG signaling pathway and mediates AKT-mediated cell migration. Plays a role in cell cycle progression by phosphorylating the cyclin dependent kinase 4/CDK4 thus regulating the G1 phase. Also involved in G2/M progression and cytokinesis (By similarity). Catalyzes phosphorylation of organic cation transporter OCT2 which induces its transport activity (PubMed:[26979622](#)).

#### Cellular Location

Cell membrane. Cytoplasm, cytoskeleton, microtubule organizing center, centrosome Cytoplasm, cytosol. Cell junction {ECO:0000250|UniProtKB:Q28923}. Note=Newly synthesized protein initially accumulates in the Golgi region and traffics to the plasma membrane through the exocytic pathway. Localized to small puncta throughout the cytoplasm and cell membrane when in the presence of SNAIL1 (By similarity). {ECO:0000250, ECO:0000250|UniProtKB:Q28923}

## Background

---

Non-receptor protein tyrosine kinase that is involved in the regulation of cell growth and survival, apoptosis, cell-cell adhesion, cytoskeleton remodeling, and differentiation. Stimulation by receptor tyrosine kinases (RTKs) including EGRF, PDGFR, CSF1R and FGFR leads to recruitment of YES1 to the phosphorylated receptor, and activation and phosphorylation of downstream substrates. Upon EGFR activation, promotes the phosphorylation of PARD3 to favor epithelial tight junction assembly. Participates in the phosphorylation of specific junctional components such as CTNND1 by stimulating the FYN and FER tyrosine kinases at cell-cell contacts. Upon T-cell stimulation by CXCL12, phosphorylates collapsin response mediator protein 2/DPYSL2 and induces T-cell migration. Participates in CD95L/FASLG signaling pathway and mediates AKT-mediated cell migration. Plays a role in cell cycle progression by phosphorylating the cyclin dependent kinase 4/CDK4 thus regulating the G1 phase. Also involved in G2/M progression and cytokinesis (By similarity).

## References

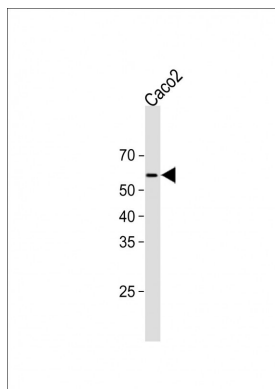
---

Klages S.,et al.Oncogene 8:713-719(1993).  
Hebert B.,et al.Gene 143:257-260(1994).  
Courtneidge S.A.,et al.EMBO J. 12:943-950(1993).  
Stein P.L.,et al.Genes Dev. 8:1999-2007(1994).  
Ariki M.,et al.J. Biochem. 121:104-111(1997).

## Images

---

All lanes : Anti-Mouse Yes1 Antibody (Center)at 1:1000 dilution + Caco2 whole cell lysate Lysates/proteins at 20 µg per lane. Secondary Goat Anti-Rabbit IgG, (H+L), Peroxidase conjugated (ASP1615) at 1/15000 dilution. Observed band size : 60kDa Blocking/Dilution buffer: 5% NFDM/TBST.



Please note: All products are 'FOR RESEARCH USE ONLY. NOT FOR USE IN DIAGNOSTIC OR THERAPEUTIC PROCEDURES'.