

LMNA(Lamin-A/C) Antibody (Center)

Purified Rabbit Polyclonal Antibody (Pab)

Catalog # AP21250c

Product Information

Application	WB, E
Primary Accession	P02545
Reactivity	Human, Rat, Mouse
Host	Rabbit
Clonality	polyclonal
Isotype	Rabbit IgG
Clone Names	RB48839
Calculated MW	74139

Additional Information

Gene ID	4000
Other Names	Prelamin-A/C, Lamin-A/C, 70 kDa lamin, Renal carcinoma antigen NY-REN-32, LMNA, LMN1
Target/Specificity	This LMNA(Lamin-A/C) antibody is generated from a rabbit immunized with a KLH conjugated synthetic peptide between 465-498 amino acids from the Central region of human LMNA(Lamin-A/C).
Dilution	WB~~1:1000 E~~Use at an assay dependent concentration.
Format	Purified polyclonal antibody supplied in PBS with 0.09% (W/V) sodium azide. This antibody is purified through a protein A column, followed by peptide affinity purification.
Storage	Maintain refrigerated at 2-8°C for up to 2 weeks. For long term storage store at -20°C in small aliquots to prevent freeze-thaw cycles.
Precautions	LMNA(Lamin-A/C) Antibody (Center) is for research use only and not for use in diagnostic or therapeutic procedures.

Protein Information

Name	LMNA
Synonyms	LMN1
Function	[Lamin-A/C]: Lamins are intermediate filament proteins that assemble into a filamentous meshwork, and which constitute the major components of the nuclear lamina, a fibrous layer on the nucleoplasmic side of the inner nuclear

membrane (PubMed:[10080180](#), PubMed:[10580070](#), PubMed:[10587585](#), PubMed:[10814726](#), PubMed:[11799477](#), PubMed:[12075506](#), PubMed:[12927431](#), PubMed:[15317753](#), PubMed:[18551513](#), PubMed:[18611980](#), PubMed:[2188730](#), PubMed:[22431096](#), PubMed:[2344612](#), PubMed:[23666920](#), PubMed:[24741066](#), PubMed:[31434876](#), PubMed:[31548606](#), PubMed:[37788673](#), PubMed:[37832547](#)). Lamins provide a framework for the nuclear envelope, bridging the nuclear envelope and chromatin, thereby playing an important role in nuclear assembly, chromatin organization, nuclear membrane and telomere dynamics (PubMed:[10080180](#), PubMed:[10580070](#), PubMed:[10587585](#), PubMed:[10814726](#), PubMed:[11799477](#), PubMed:[12075506](#), PubMed:[12927431](#), PubMed:[15317753](#), PubMed:[18551513](#), PubMed:[18611980](#), PubMed:[22431096](#), PubMed:[23666920](#), PubMed:[24741066](#), PubMed:[31548606](#), PubMed:[37788673](#), PubMed:[37832547](#)). Lamin A and C also regulate matrix stiffness by conferring nuclear mechanical properties (PubMed:[23990565](#), PubMed:[25127216](#)). The structural integrity of the lamina is strictly controlled by the cell cycle, as seen by the disintegration and formation of the nuclear envelope in prophase and telophase, respectively (PubMed:[2188730](#), PubMed:[2344612](#)). Lamin A and C are present in equal amounts in the lamina of mammals (PubMed:[10080180](#), PubMed:[10580070](#), PubMed:[10587585](#), PubMed:[10814726](#), PubMed:[11799477](#), PubMed:[12075506](#), PubMed:[12927431](#), PubMed:[15317753](#), PubMed:[18551513](#), PubMed:[18611980](#), PubMed:[22431096](#), PubMed:[23666920](#), PubMed:[31548606](#)). Also involved in DNA repair: recruited by DNA repair proteins XRCC4 and IFFO1 to the DNA double-strand breaks (DSBs) to prevent chromosome translocation by immobilizing broken DNA ends (PubMed:[31548606](#)). Required for normal development of peripheral nervous system and skeletal muscle and for muscle satellite cell proliferation (PubMed:[10080180](#), PubMed:[10814726](#), PubMed:[11799477](#), PubMed:[18551513](#), PubMed:[22431096](#)). Required for osteoblastogenesis and bone formation (PubMed:[12075506](#), PubMed:[15317753](#), PubMed:[18611980](#)). Also prevents fat infiltration of muscle and bone marrow, helping to maintain the volume and strength of skeletal muscle and bone (PubMed:[10587585](#)). Required for cardiac homeostasis (PubMed:[10580070](#), PubMed:[12927431](#), PubMed:[18611980](#), PubMed:[23666920](#)).

Cellular Location

Nucleus lamina. Nucleus envelope. Nucleus, nucleoplasm. Nucleus matrix. Note=Farnesylation of prelamin-A/C facilitates nuclear envelope targeting and subsequent cleavage by ZMPSTE24/FACE1 to remove the farnesyl group produces mature lamin-A/C, which can then be inserted into the nuclear lamina (PubMed:[15317753](#)) EMD is required for proper localization of non-farnesylated prelamin- A/C (PubMed:[19323649](#)). Also localizes to the micronuclear envelope in response to response to genome instability (PubMed:[37788673](#))

Tissue Location

In the arteries, prelamin-A/C accumulation is not observed in young healthy vessels but is prevalent in medial vascular smooth muscle cells (VSMCs) from aged individuals and in atherosclerotic lesions, where it often colocalizes with senescent and degenerate VSMCs. Prelamin-A/C expression increases with age and disease. In normal aging, the accumulation of prelamin-A/C is caused in part by the down-regulation of ZMPSTE24/FACE1 in response to oxidative stress.

Background

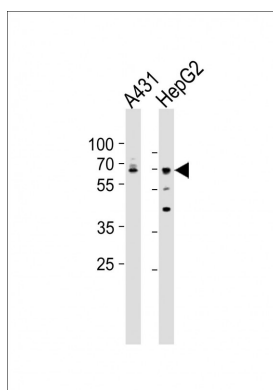
Lamins are components of the nuclear lamina, a fibrous layer on the nucleoplasmic side of the inner nuclear membrane, which is thought to provide a framework for the nuclear envelope and may also interact with chromatin. Lamin A and C are present in equal amounts in the lamina of mammals. Plays an important role in nuclear assembly, chromatin organization, nuclear membrane and telomere dynamics. Required for

normal development of peripheral nervous system and skeletal muscle and for muscle satellite cell proliferation. Required for osteoblastogenesis and bone formation. Also prevents fat infiltration of muscle and bone marrow, helping to maintain the volume and strength of skeletal muscle and bone.

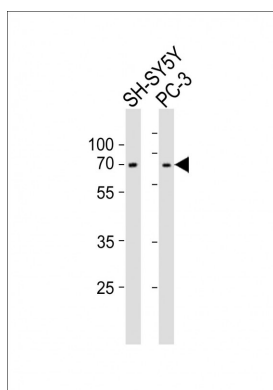
References

McKeon F.D.,et al.Nature 319:463-468(1986).
Fisher D.Z.,et al.Proc. Natl. Acad. Sci. U.S.A. 83:6450-6454(1986).
Sylvius N.,et al.J. Med. Genet. 42:639-647(2005).
Csoka A.B.,et al.Submitted (JUL-2003) to the EMBL/GenBank/DDBJ databases.
Ota T.,et al.Nat. Genet. 36:40-45(2004).

Images



All lanes : Anti-LMNA(Lamin-A/C) Antibody (Center) at 1:500 dilution Lane 1: A431 whole cell lysates Lane 2: HepG2 whole cell lysates Lysates/proteins at 20 µg per lane. Secondary Goat Anti-Rabbit IgG, (H+L), Peroxidase conjugated at 1/10000 dilution Predicted band size : 74 kDa Blocking/Dilution buffer: 5% NFDM/TBST.



All lanes : Anti-LMNA(Lamin-A/C) Antibody (Center) at 1:1000 dilution Lane 1: SH-SY5Y whole cell lysates Lane 2: PC-3 whole cell lysates Lysates/proteins at 20 µg per lane. Secondary Goat Anti-Rabbit IgG, (H+L), Peroxidase conjugated at 1/10000 dilution Predicted band size : 74 kDa Blocking/Dilution buffer: 5% NFDM/TBST.

Please note: All products are 'FOR RESEARCH USE ONLY. NOT FOR USE IN DIAGNOSTIC OR THERAPEUTIC PROCEDURES'.