

# MFSD6L Antibody (N-term)

Purified Rabbit Polyclonal Antibody (Pab)

Catalog # AP21251a

## Product Information

---

Application	WB, E
Primary Accession	<a href="#">Q8IWD5</a>
Reactivity	Human
Host	Rabbit
Clonality	polyclonal
Isotype	Rabbit IgG
Clone Names	RB48721
Calculated MW	64005

## Additional Information

---

Gene ID	162387
Other Names	Major facilitator superfamily domain-containing protein 6-like, MFSD6L
Target/Specificity	This MFSD6L antibody is generated from a rabbit immunized with a KLH conjugated synthetic peptide between 156-189 amino acids from the N-terminal region of human MFSD6L.
Dilution	WB~~1:2000 E~~Use at an assay dependent concentration.
Format	Purified polyclonal antibody supplied in PBS with 0.09% (W/V) sodium azide. This antibody is purified through a protein A column, followed by peptide affinity purification.
Storage	Maintain refrigerated at 2-8°C for up to 2 weeks. For long term storage store at -20°C in small aliquots to prevent freeze-thaw cycles.
Precautions	MFSD6L Antibody (N-term) is for research use only and not for use in diagnostic or therapeutic procedures.

## Protein Information

---

Name	MFSD6L
Cellular Location	Membrane; Multi-pass membrane protein

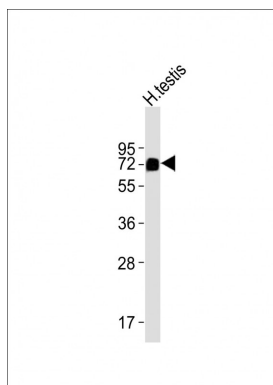
## References

---

Wan D.,et al.Proc. Natl. Acad. Sci. U.S.A. 101:15724-15729(2004).  
Ota T.,et al.Nat. Genet. 36:40-45(2004).

## Images

---



Anti-MFSD6L Antibody (N-term) at 1:2000 dilution + human testis lysates. Lysates/proteins at 20 µg per lane. Secondary Goat Anti-Rabbit IgG, (H+L), Peroxidase conjugated at 1/10000 dilution. Predicted band size : 64 kDa. Blocking/Dilution buffer: 5% NFDM/TBST.

Please note: All products are 'FOR RESEARCH USE ONLY. NOT FOR USE IN DIAGNOSTIC OR THERAPEUTIC PROCEDURES'.