

CDX4 Antibody (Center)

Purified Rabbit Polyclonal Antibody (Pab)
Catalog # AP21253c

Product Information

Application	WB, E
Primary Accession	O14627
Reactivity	Human, Rat, Mouse
Host	Rabbit
Clonality	polyclonal
Isotype	Rabbit IgG
Clone Names	RB51237

Additional Information

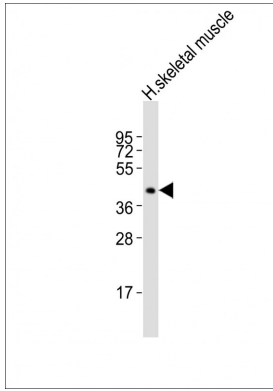
Other Names	Homeobox protein CDX-4, Caudal-type homeobox protein 4, CDX4
Target/Specificity	This CDX4 antibody is generated from a rabbit immunized with a KLH conjugated synthetic peptide between 181-214 amino acids from the Central region of human CDX4.
Dilution	WB~~1:2000 E~~Use at an assay dependent concentration.
Format	Purified polyclonal antibody supplied in PBS with 0.09% (W/V) sodium azide. This antibody is purified through a protein A column, followed by peptide affinity purification.
Storage	Maintain refrigerated at 2-8°C for up to 2 weeks. For long term storage store at -20°C in small aliquots to prevent freeze-thaw cycles.
Precautions	CDX4 Antibody (Center) is for research use only and not for use in diagnostic or therapeutic procedures.

Protein Information

References

Chen E.Y.,et al.Submitted (MAY-1997) to the EMBL/GenBank/DDBJ databases.
Chiaroni P.,et al.Submitted (OCT-1997) to the EMBL/GenBank/DDBJ databases.
Ross M.T.,et al.Nature 434:325-337(2005).
Mural R.J.,et al.Submitted (SEP-2005) to the EMBL/GenBank/DDBJ databases.

Images



Anti-CDX4 Antibody (Center) at 1:2000 dilution + human skeletal muscle lysates Lysates/proteins at 20 μ g per lane. Secondary Goat Anti-Rabbit IgG, (H+L), Peroxidase conjugated at 1/10000 dilution Predicted band size : 30 kDa Blocking/Dilution buffer: 5% NFDM/TBST.

Please note: All products are 'FOR RESEARCH USE ONLY. NOT FOR USE IN DIAGNOSTIC OR THERAPEUTIC PROCEDURES'.