

INSM2 Antibody (Center)

Purified Rabbit Polyclonal Antibody (Pab)

Catalog # AP21281c

Product Information

Application	WB, E
Primary Accession	Q96T92
Reactivity	Human
Host	Rabbit
Clonality	polyclonal
Isotype	Rabbit IgG
Clone Names	RB49258
Calculated MW	59491

Additional Information

Gene ID	84684
Other Names	Insulinoma-associated protein 2, Zinc finger protein IA-6, INSM2, IA6
Target/Specificity	This INSM2 antibody is generated from a rabbit immunized with a KLH conjugated synthetic peptide between 192-227 amino acids from the Central region of human INSM2.
Dilution	WB~~1:1000 E~~Use at an assay dependent concentration.
Format	Purified polyclonal antibody supplied in PBS with 0.09% (W/V) sodium azide. This antibody is purified through a protein A column, followed by peptide affinity purification.
Storage	Maintain refrigerated at 2-8°C for up to 2 weeks. For long term storage store at -20°C in small aliquots to prevent freeze-thaw cycles.
Precautions	INSM2 Antibody (Center) is for research use only and not for use in diagnostic or therapeutic procedures.

Protein Information

Name	INSM2
Synonyms	IA6
Function	May function as a growth suppressor or tumor suppressor in liver cells and in certain neurons.
Cellular Location	Cytoplasm. Nucleus.

Tissue Location

Expressed in heart, liver, skeletal muscle, kidney and pancreas, and, to a lesser extent, in brain, lung and spleen. In the pancreas, expressed in islet cells, including insulin- and glucagon-producing alpha- and beta-cells, but not in acinar cells (at protein level). Detected in adrenal glands, particularly in the deeper layer of the cortex (at protein level).

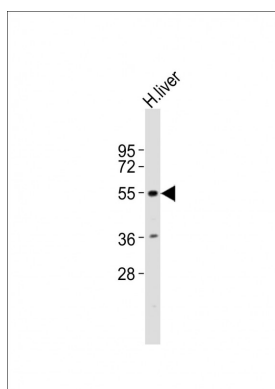
Background

May function as a growth suppressor or tumor suppressor in liver cells and in certain neurons.

References

Cai T.,et al.Submitted (APR-2000) to the EMBL/GenBank/DDBJ databases.
Halford S.,et al.Submitted (JUL-2012) to the EMBL/GenBank/DDBJ databases.
Ohira M.,et al.Cancer Lett. 197:63-68(2003).
Ota T.,et al.Nat. Genet. 36:40-45(2004).
Heilig R.,et al.Nature 421:601-607(2003).

Images



Anti-INSM2 Antibody (Center)at 1:1000 dilution + human liver lysates Lysates/proteins at 20 µg per lane. Secondary Goat Anti-Rabbit IgG, (H+L), Peroxidase conjugated at 1/10000 dilution Predicted band size : 59 kDa
Blocking/Dilution buffer: 5% NFDm/TBST.

Please note: All products are 'FOR RESEARCH USE ONLY. NOT FOR USE IN DIAGNOSTIC OR THERAPEUTIC PROCEDURES'.