

PCGF6 Antibody (Center)

Purified Rabbit Polyclonal Antibody (Pab)

Catalog # AP21285c

Product Information

Application	WB, E
Primary Accession	Q9BYE7
Reactivity	Human, Rat, Mouse
Host	Rabbit
Clonality	polyclonal
Isotype	Rabbit IgG
Clone Names	RB51295
Calculated MW	39047

Additional Information

Gene ID	84108
Other Names	Polycomb group RING finger protein 6, Mel18 and Bmi1-like RING finger, RING finger protein 134, PCGF6, MBLR, RNF134
Target/Specificity	This PCGF6 antibody is generated from a rabbit immunized with a KLH conjugated synthetic peptide between 215-249 amino acids from the Central region of human PCGF6.
Dilution	WB~~1:2000 E~~Use at an assay dependent concentration.
Format	Purified polyclonal antibody supplied in PBS with 0.09% (W/V) sodium azide. This antibody is purified through a protein A column, followed by peptide affinity purification.
Storage	Maintain refrigerated at 2-8°C for up to 2 weeks. For long term storage store at -20°C in small aliquots to prevent freeze-thaw cycles.
Precautions	PCGF6 Antibody (Center) is for research use only and not for use in diagnostic or therapeutic procedures.

Protein Information

Name	PCGF6
Synonyms	MBLR, RNF134
Function	Transcriptional repressor (PubMed: 12167161). May modulate the levels of histone H3K4Me3 by activating KDM5D histone demethylase (PubMed: 17320162). Component of a Polycomb group (PcG) multiprotein

PRC1-like complex, a complex class required to maintain the transcriptionally repressive state of many genes, including Hox genes, throughout development. PcG PRC1 complex acts via chromatin remodeling and modification of histones; it mediates monoubiquitination of histone H2A 'Lys-119', rendering chromatin heritably changed in its expressibility (PubMed:[12167161](#)). Within the PRC1-like complex, regulates RNF2 ubiquitin ligase activity (PubMed:[26151332](#)).

Cellular Location	Nucleus
Tissue Location	Ubiquitous.

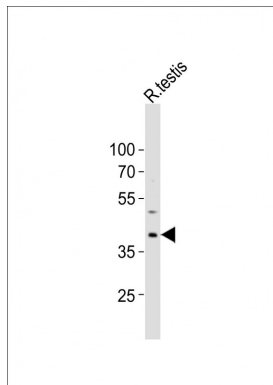
Background

Transcriptional repressor. May modulate the levels of histone H3K4Me3 by activating KDM5D histone demethylase. Component of a Polycomb group (PcG) multiprotein PRC1-like complex, a complex class required to maintain the transcriptionally repressive state of many genes, including Hox genes, throughout development. PcG PRC1 complex acts via chromatin remodeling and modification of histones; it mediates monoubiquitination of histone H2A 'Lys-119', rendering chromatin heritably changed in its expressibility.

References

Akasaka T.,et al.Genes Cells 7:835-850(2002).
Ota T.,et al.Nat. Genet. 36:40-45(2004).
Deloukas P.,et al.Nature 429:375-381(2004).
Lee M.G.,et al.Cell 128:877-887(2007).
Maertens G.N.,et al.PLoS ONE 4:E6380-E6380(2009).

Images



Anti-PCGF6 Antibody (Center)at 1:2000 dilution + rat testis lysates Lysates/proteins at 20 µg per lane. Secondary Goat Anti-Rabbit IgG, (H+L), Peroxidase conjugated at 1/10000 dilution Predicted band size : 39 kDa Blocking/Dilution buffer: 5% NFDM/TBST.

Please note: All products are 'FOR RESEARCH USE ONLY. NOT FOR USE IN DIAGNOSTIC OR THERAPEUTIC PROCEDURES'.