

## (DANRE) gabarapa Antibody (N-Term)

Purified Rabbit Polyclonal Antibody (Pab)

Catalog # AP21286a

### Product Information

---

Application	WB, E
Primary Accession	<a href="#">Q6PSS4</a>
Reactivity	Human, Zebrafish
Host	Rabbit
Clonality	polyclonal
Isotype	Rabbit IgG
Clone Names	RB52000

### Additional Information

---

Target/Specificity	This DANRE gabarapa antibody is generated from a rabbit immunized with a KLH conjugated synthetic peptide between 33-66 amino acids from the human region of DANRE gabarapa.
Dilution	WB~~1:500 E~~Use at an assay dependent concentration.
Format	Purified polyclonal antibody supplied in PBS with 0.09% (W/V) sodium azide. This antibody is purified through a protein A column, followed by peptide affinity purification.
Storage	Maintain refrigerated at 2-8°C for up to 2 weeks. For long term storage store at -20°C in small aliquots to prevent freeze-thaw cycles.
Precautions	(DANRE) gabarapa Antibody (N-Term) is for research use only and not for use in diagnostic or therapeutic procedures.

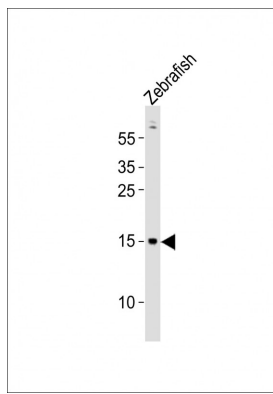
### Protein Information

---

### Images

---

Anti-gabarapa Antibody (N-Term)at 1:500 dilution + zebrafish lysates Lysates/proteins at 20 µg per lane. Secondary Goat Anti-Rabbit IgG, (H+L), Peroxidase conjugated at 1/10000 dilution Predicted band size : 14 kDa Blocking/Dilution buffer: 5% NFDM/TBST.



Please note: All products are 'FOR RESEARCH USE ONLY. NOT FOR USE IN DIAGNOSTIC OR THERAPEUTIC PROCEDURES'.