

(DANRE) becn1 Antibody (C-Term)

Purified Rabbit Polyclonal Antibody (Pab)

Catalog # AP21289b

Product Information

Application	WB, E
Primary Accession	A2A135
Reactivity	Human, Zebrafish, Mouse
Host	Rabbit
Clonality	polyclonal
Isotype	Rabbit IgG
Clone Names	RB51990

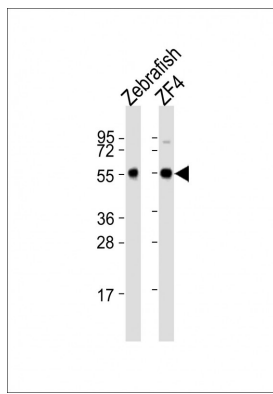
Additional Information

Target/Specificity	This DANRE becn1 antibody is generated from a rabbit immunized with a KLH conjugated synthetic peptide between 388-421 amino acids from the human region of DANRE becn1.
Dilution	WB~~1:2000 E~~Use at an assay dependent concentration.
Format	Purified polyclonal antibody supplied in PBS with 0.09% (W/V) sodium azide. This antibody is purified through a protein A column, followed by peptide affinity purification.
Storage	Maintain refrigerated at 2-8°C for up to 2 weeks. For long term storage store at -20°C in small aliquots to prevent freeze-thaw cycles.
Precautions	(DANRE) becn1 Antibody (C-Term) is for research use only and not for use in diagnostic or therapeutic procedures.

Protein Information

Images

All lanes : Anti-becn1 Antibody (C-Term) at 1:2000 dilution
Lane 1: Zebrafish lysates Lane 2: ZF4 whole cell lysates
Lysates/proteins at 20 µg per lane. Secondary Goat
Anti-Rabbit IgG, (H+L), Peroxidase conjugated at 1/10000
dilution Predicted band size : 51 kDa Blocking/Dilution
buffer: 5% NFDM/TBST.



Please note: All products are 'FOR RESEARCH USE ONLY. NOT FOR USE IN DIAGNOSTIC OR THERAPEUTIC PROCEDURES'.