

SEMA3E Antibody

Purified Rabbit Polyclonal Antibody (Pab)

Catalog # AP21300a

Product Information

Application	WB, E
Primary Accession	O15041
Reactivity	Human
Host	Rabbit
Clonality	polyclonal
Isotype	Rabbit IgG
Clone Names	RB52398
Calculated MW	89228

Additional Information

Gene ID	9723
Other Names	Semaphorin-3E, SEMA3E, KIAA0331, SEMAH
Target/Specificity	This SEMA3E antibody is generated from a rabbit immunized with a KLH recombinant protein.
Dilution	WB~~1:2000 E~~Use at an assay dependent concentration.
Format	Purified polyclonal antibody supplied in PBS with 0.09% (W/V) sodium azide. This antibody is purified through a protein A column, followed by peptide affinity purification.
Storage	Maintain refrigerated at 2-8°C for up to 2 weeks. For long term storage store at -20°C in small aliquots to prevent freeze-thaw cycles.
Precautions	SEMA3E Antibody is for research use only and not for use in diagnostic or therapeutic procedures.

Protein Information

Name	SEMA3E
Synonyms	KIAA0331, SEMAH
Function	Plays an important role in signaling via the cell surface receptor PLXND1. Mediates reorganization of the actin cytoskeleton, leading to the retraction of cell projections. Promotes focal adhesion disassembly and inhibits adhesion of endothelial cells to the extracellular matrix. Regulates angiogenesis, both during embryogenesis and after birth. Can down-regulate sprouting

angiogenesis. Required for normal vascular patterning during embryogenesis. Plays an important role in ensuring the specificity of synapse formation (By similarity).

Cellular Location

Secreted.

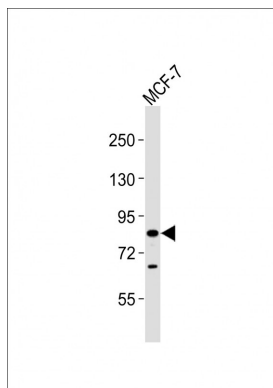
Background

Plays an important role in signaling via the cell surface receptor PLXND1. Mediates reorganization of the actin cytoskeleton, leading to the retraction of cell projections. Promotes focal adhesion disassembly and inhibits adhesion of endothelial cells to the extracellular matrix. Regulates angiogenesis, both during embryogenesis and after birth. Can down- regulate sprouting angiogenesis. Required for normal vascular patterning during embryogenesis. Plays an important role in ensuring the specificity of synapse formation (By similarity).

References

Nagase T.,et al.DNA Res. 4:141-150(1997).
Ota T.,et al.Nat. Genet. 36:40-45(2004).
Hillier L.W.,et al.Nature 424:157-164(2003).

Images



Anti-SEMA3E Antibody at 1:2000 dilution + MCF-7 whole cell lysates. Lysates/proteins at 20 µg per lane. Secondary Goat Anti-Rabbit IgG, (H+L), Peroxidase conjugated at 1/10000 dilution. Predicted band size : 89 kDa. Blocking/Dilution buffer: 5% NFDM/TBST.

Please note: All products are 'FOR RESEARCH USE ONLY. NOT FOR USE IN DIAGNOSTIC OR THERAPEUTIC PROCEDURES'.