

(Mouse) Eras Antibody (C-term)

Purified Rabbit Polyclonal Antibody (Pab)

Catalog # AP21303b

Product Information

Application	WB, E
Primary Accession	Q7TN89
Reactivity	Rat, Mouse
Host	Rabbit
Clonality	polyclonal
Isotype	Rabbit IgG
Clone Names	RB52380
Calculated MW	24321

Additional Information

Gene ID	353283
Other Names	GTPase ERas, E-Ras, Embryonic stem cell-expressed Ras, Eras
Target/Specificity	This Mouse Eras antibody is generated from a rabbit immunized with a KLH conjugated synthetic peptide between 202-236 amino acids from the C-terminal region of Mouse Eras.
Dilution	WB~~1:2000 E~~Use at an assay dependent concentration.
Format	Purified polyclonal antibody supplied in PBS with 0.09% (W/V) sodium azide. This antibody is purified through a protein A column, followed by peptide affinity purification.
Storage	Maintain refrigerated at 2-8°C for up to 2 weeks. For long term storage store at -20°C in small aliquots to prevent freeze-thaw cycles.
Precautions	(Mouse) Eras Antibody (C-term) is for research use only and not for use in diagnostic or therapeutic procedures.

Protein Information

Name	Eras
Function	Ras proteins bind GDP/GTP and possess intrinsic GTPase activity. Plays an important role in the tumor-like growth properties of embryonic stem cells.
Cellular Location	Cell membrane; Lipid-anchor; Cytoplasmic side
Tissue Location	Expressed in several undifferentiated mouse embryonic stem cell lines.

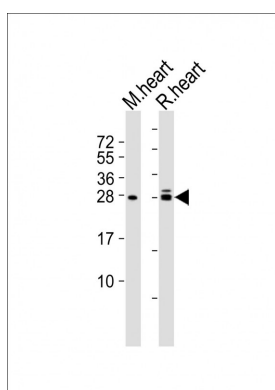
Background

Ras proteins bind GDP/GTP and possess intrinsic GTPase activity. Plays an important role in the tumor-like growth properties of embryonic stem cells.

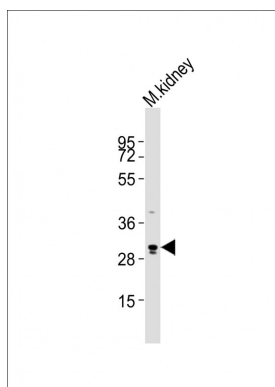
References

Takahashi K.,et al.Nature 423:541-545(2003).
Carninci P.,et al.Science 309:1559-1563(2005).

Images



All lanes : Anti-Eras Antibody (C-term) at 1:2000 dilution
Lane 1: mouse heart lysates Lane 2: rat heart lysates
Lysates/proteins at 20 µg per lane. Secondary Goat Anti-Rabbit IgG, (H+L), Peroxidase conjugated at 1/10000 dilution Predicted band size : 24 kDa Blocking/Dilution buffer: 5% NFDM/TBST.



Anti-Eras Antibody (C-term)at 1:2000 dilution + mouse kidney lysates Lysates/proteins at 20 µg per lane.
Secondary Goat Anti-Rabbit IgG, (H+L), Peroxidase conjugated at 1/10000 dilution Predicted band size : 24 kDa Blocking/Dilution buffer: 5% NFDM/TBST.

Please note: All products are 'FOR RESEARCH USE ONLY. NOT FOR USE IN DIAGNOSTIC OR THERAPEUTIC PROCEDURES'.