

Mouse Mesp1 Antibody (Center)

Purified Rabbit Polyclonal Antibody (Pab)

Catalog # AP21308c

Product Information

Application	WB, E
Primary Accession	P97309
Reactivity	Mouse
Host	Rabbit
Clonality	polyclonal
Isotype	Rabbit IgG
Clone Names	RB52439
Calculated MW	26386

Additional Information

Gene ID	17292
Other Names	Mesoderm posterior protein 1, Mesp1
Target/Specificity	This Mouse Mesp1 antibody is generated from a rabbit immunized with a KLH conjugated synthetic peptide between 138-173 amino acids from the Central region of Mouse Mesp1.
Dilution	WB~~1:2000 E~~Use at an assay dependent concentration.
Format	Purified polyclonal antibody supplied in PBS with 0.09% (W/V) sodium azide. This antibody is purified through a protein A column, followed by peptide affinity purification.
Storage	Maintain refrigerated at 2-8°C for up to 2 weeks. For long term storage store at -20°C in small aliquots to prevent freeze-thaw cycles.
Precautions	Mouse Mesp1 Antibody (Center) is for research use only and not for use in diagnostic or therapeutic procedures.

Protein Information

Name	Mesp1
Function	Transcription factor. Plays a role in the epithelialization of somitic mesoderm and in the development of cardiac mesoderm. Defines the rostrocaudal patterning of the somites by participating in distinct Notch pathways.
Cellular Location	Nucleus.

Tissue Location

No expression was detected in adult tissues except the testis. Expression in the testis was regulated developmentally; expressed 2 weeks after birth, and increases, reaching the full expression level in mature testes.

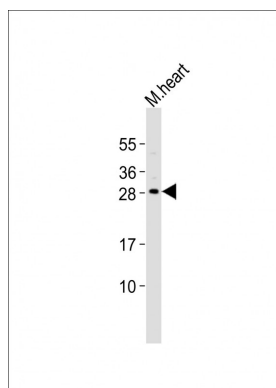
Background

Transcription factor. Plays a role in the epithelialization of somitic mesoderm and in the development of cardiac mesoderm. Defines the rostrocaudal patterning of the somites by participating in distinct Notch pathways.

References

Saga Y.,et al.Development 122:2769-2778(1996).
Kitajima S.,et al.Development 127:3215-3226(2000).
Takahashi Y.,et al.Development 132:787-796(2005).
Takahashi Y.,et al.Dev. Biol. 304:593-603(2007).

Images



Anti-Mesp1 Antibody (Center)at 1:2000 dilution + mouse heart lysates Lysates/proteins at 20 µg per lane.
Secondary Goat Anti-Rabbit IgG, (H+L), Peroxidase conjugated at 1/10000 dilution Predicted band size : 26 kDa Blocking/Dilution buffer: 5% NFDM/TBST.

Please note: All products are 'FOR RESEARCH USE ONLY. NOT FOR USE IN DIAGNOSTIC OR THERAPEUTIC PROCEDURES'.