

NODAL Antibody

Purified Rabbit Polyclonal Antibody (Pab)

Catalog # AP21320a

Product Information

Application	WB, E
Primary Accession	Q96S42
Reactivity	Human, Mouse
Host	Rabbit
Clonality	polyclonal
Isotype	Rabbit IgG
Clone Names	RB52560
Calculated MW	39561

Additional Information

Gene ID	4838
Other Names	Nodal homolog, NODAL
Target/Specificity	This NODAL antibody is generated from a rabbit immunized with a recombinant protein.
Dilution	WB~~1:1000 E~~Use at an assay dependent concentration.
Format	Purified polyclonal antibody supplied in PBS with 0.09% (W/V) sodium azide. This antibody is purified through a protein A column, followed by peptide affinity purification.
Storage	Maintain refrigerated at 2-8°C for up to 2 weeks. For long term storage store at -20°C in small aliquots to prevent freeze-thaw cycles.
Precautions	NODAL Antibody is for research use only and not for use in diagnostic or therapeutic procedures.

Protein Information

Name	NODAL
Function	Essential for mesoderm formation and axial patterning during embryonic development.
Cellular Location	Secreted.

Background

Essential for mesoderm formation and axial patterning during embryonic development.

References

Tate Genshu T.,et al.Submitted (JUL-2001) to the EMBL/GenBank/DDBJ databases.

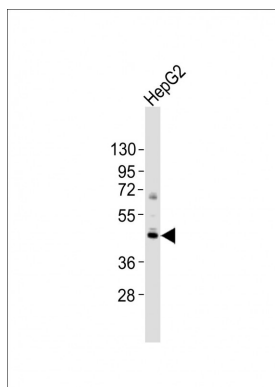
Deloukas P.,et al.Nature 429:375-381(2004).

Gebbia M.,et al.Nat. Genet. 17:305-308(1997).

Sjoebloom T.,et al.Science 314:268-274(2006).

Mohapatra B.,et al.Hum. Mol. Genet. 18:861-871(2009).

Images



Anti-NODAL Antibody at 1:1000 dilution + HepG2 whole cell lysates. Lysates/proteins at 20 µg per lane. Secondary Goat Anti-Rabbit IgG, (H+L), Peroxidase conjugated at 1/10000 dilution. Predicted band size : 40 kDa. Blocking/Dilution buffer: 5% NFDM/TBST.

Please note: All products are 'FOR RESEARCH USE ONLY. NOT FOR USE IN DIAGNOSTIC OR THERAPEUTIC PROCEDURES'.