

Npy2r Antibody (N-term).ctrl

Purified Rabbit Polyclonal Antibody (Pab)

Catalog # AP21326a

Product Information

Application	WB, E
Primary Accession	P97295
Reactivity	Human, Mouse
Host	Rabbit
Clonality	polyclonal
Isotype	Rabbit IgG
Clone Names	RB52771
Calculated MW	42628

Additional Information

Gene ID	18167
Other Names	Neuropeptide Y receptor type 2, NPY2-R, NPY-Y2 receptor, Y2 receptor, Npy2r
Target/Specificity	This Npy2r antibody is generated from a rabbit immunized with a KLH conjugated synthetic peptide between 23-59 amino acids from the N-terminal region of human Npy2r.
Dilution	WB~~1:2000 E~~Use at an assay dependent concentration.
Format	Purified polyclonal antibody supplied in PBS with 0.09% (W/V) sodium azide. This antibody is purified through a protein A column, followed by peptide affinity purification.
Storage	Maintain refrigerated at 2-8°C for up to 2 weeks. For long term storage store at -20°C in small aliquots to prevent freeze-thaw cycles.
Precautions	Npy2r Antibody (N-term).ctrl is for research use only and not for use in diagnostic or therapeutic procedures.

Protein Information

Name	Npy2r
Function	Receptor for neuropeptide Y and peptide YY.
Cellular Location	Cell membrane; Multi-pass membrane protein.

Background

Receptor for neuropeptide Y and peptide YY.

References

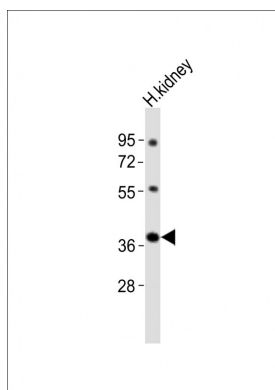
Nakamura M.,et al.Biochim. Biophys. Acta 1284:134-137(1996).

Carninci P.,et al.Science 309:1559-1563(2005).

Church D.M.,et al.PLoS Biol. 7:E1000112-E1000112(2009).

Mural R.J.,et al.Submitted (JUL-2005) to the EMBL/GenBank/DDBJ databases.

Images



Anti-Npy2r Antibody (N-term). ctrlrat 1:2000 dilution + human kidney lysates Lysates/proteins at 20 µg per lane. Secondary Goat Anti-Rabbit IgG, (H+L), Peroxidase conjugated at 1/10000 dilution Predicted band size : 43 kDa Blocking/Dilution buffer: 5% NFDM/TBST.

Please note: All products are 'FOR RESEARCH USE ONLY. NOT FOR USE IN DIAGNOSTIC OR THERAPEUTIC PROCEDURES'.