

Nodal Antibody

Purified Rabbit Polyclonal Antibody (Pab)

Catalog # AP21327a

Product Information

Application	WB, E
Primary Accession	P43021
Reactivity	Human, Mouse
Host	Rabbit
Clonality	polyclonal
Isotype	Rabbit IgG
Clone Names	RB52663
Calculated MW	40476

Additional Information

Gene ID	18119
Other Names	Nodal, Nodal
Target/Specificity	This Nodal antibody is generated from a rabbit immunized with a recombinant protein.
Dilution	WB~~1:2000 E~~Use at an assay dependent concentration.
Format	Purified polyclonal antibody supplied in PBS with 0.09% (W/V) sodium azide. This antibody is purified through a protein A column, followed by peptide affinity purification.
Storage	Maintain refrigerated at 2-8°C for up to 2 weeks. For long term storage store at -20°C in small aliquots to prevent freeze-thaw cycles.
Precautions	Nodal Antibody is for research use only and not for use in diagnostic or therapeutic procedures.

Protein Information

Name	Nodal
Function	Essential for mesoderm formation and axial patterning during embryonic development.
Cellular Location	Secreted.

Background

Essential for mesoderm formation and axial patterning during embryonic development.

References

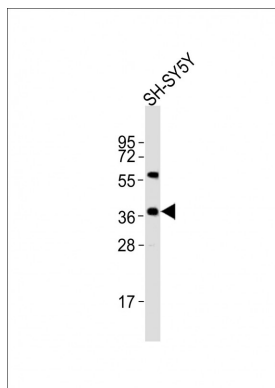
Zhou X.,et al.Nature 361:543-547(1993).

Carninci P.,et al.Science 309:1559-1563(2005).

Mural R.J.,et al.Submitted (SEP-2005) to the EMBL/GenBank/DDBJ databases.

Jones C.M.,et al.Development 121:3651-3662(1995).

Images



Anti-Nodal Antibody at 1:2000 dilution + SH-SY5Y whole cell lysates. Lysates/proteins at 20 µg per lane. Secondary Goat Anti-Rabbit IgG, (H+L), Peroxidase conjugated at 1/10000 dilution. Predicted band size : 40 kDa. Blocking/Dilution buffer: 5% NFDM/TBST.

Please note: All products are 'FOR RESEARCH USE ONLY. NOT FOR USE IN DIAGNOSTIC OR THERAPEUTIC PROCEDURES'.