

(DANRE) mtm1 Antibody (C-Term)

Purified Rabbit Polyclonal Antibody (Pab)

Catalog # AP21338b

Product Information

Application	WB, E
Primary Accession	Q32PM3
Reactivity	Human, Zebrafish, Mouse
Host	Rabbit
Clonality	polyclonal
Isotype	Rabbit IgG
Clone Names	RB52010

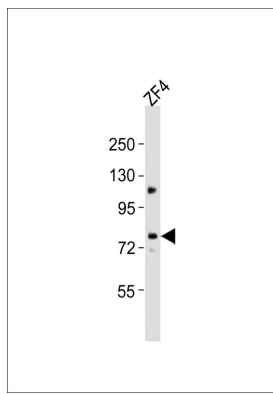
Additional Information

Target/Specificity	This DANRE mtm1 antibody is generated from a rabbit immunized with a KLH conjugated synthetic peptide between 451-485 amino acids from the region of DANRE mtm1.
Dilution	WB~~1:2000 E~~Use at an assay dependent concentration.
Format	Purified polyclonal antibody supplied in PBS with 0.09% (W/V) sodium azide. This antibody is purified through a protein A column, followed by peptide affinity purification.
Storage	Maintain refrigerated at 2-8°C for up to 2 weeks. For long term storage store at -20°C in small aliquots to prevent freeze-thaw cycles.
Precautions	(DANRE) mtm1 Antibody (C-Term) is for research use only and not for use in diagnostic or therapeutic procedures.

Protein Information

Images

Anti-mtm1 Antibody (C-Term)at 1:2000 dilution + ZF4 whole cell lysates Lysates/proteins at 20 µg per lane. Secondary Goat Anti-Rabbit IgG, (H+L), Peroxidase conjugated at 1/10000 dilution Predicted band size : 74 kDa Blocking/Dilution buffer: 5% NFDM/TBST.



Please note: All products are 'FOR RESEARCH USE ONLY. NOT FOR USE IN DIAGNOSTIC OR THERAPEUTIC PROCEDURES'.