

RABEP1 Antibody (Center)

Purified Rabbit Polyclonal Antibody (Pab)

Catalog # AP21346c

Product Information

Application	WB, E
Primary Accession	Q15276
Reactivity	Human, Rat, Mouse
Host	Rabbit
Clonality	polyclonal
Isotype	Rabbit IgG
Clone Names	RB52806
Calculated MW	99290

Additional Information

Gene ID	9135
Other Names	Rab GTPase-binding effector protein 1, Rabaptin-4, Rabaptin-5, Rabaptin-5alpha, Renal carcinoma antigen NY-REN-17, RABEP1, RAB5EP, RABPT5, RABPT5A
Target/Specificity	This RABEP1 antibody is generated from a rabbit immunized with a KLH conjugated synthetic peptide between 427-461 amino acids from the Central region of human RABEP1.
Dilution	WB~~1:2000 E~~Use at an assay dependent concentration.
Format	Purified polyclonal antibody supplied in PBS with 0.09% (W/V) sodium azide. This antibody is purified through a protein A column, followed by peptide affinity purification.
Storage	Maintain refrigerated at 2-8°C for up to 2 weeks. For long term storage store at -20°C in small aliquots to prevent freeze-thaw cycles.
Precautions	RABEP1 Antibody (Center) is for research use only and not for use in diagnostic or therapeutic procedures.

Protein Information

Name	RABEP1
Synonyms	RAB5EP, RABPT5, RABPT5A
Function	Rab effector protein acting as linker between gamma-adaptin, RAB4A and RAB5A. Involved in endocytic membrane fusion and membrane trafficking of

recycling endosomes. Involved in KCNH1 channels trafficking to and from the cell membrane (PubMed:[22841712](#)). Stimulates RABGEF1 mediated nucleotide exchange on RAB5A. Mediates the traffic of PKD1:PKD2 complex from the endoplasmic reticulum through the Golgi to the cilium (By similarity).

Cellular Location

Cytoplasm. Early endosome. Recycling endosome. Cytoplasmic vesicle

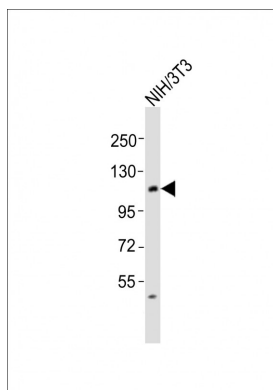
Background

Rab effector protein acting as linker between gamma- adaptin, RAB4A and RAB5A. Involved in endocytic membrane fusion and membrane trafficking of recycling endosomes. Stimulates RABGEF1 mediated nucleotide exchange on RAB5A.

References

Stenmark H.,et al.Cell 83:423-432(1995).
Nagelkerken B.,et al.Biochem. J. 346:593-601(2000).
Ota T.,et al.Nat. Genet. 36:40-45(2004).
Lubec G.,et al.Submitted (DEC-2008) to UniProtKB.
Horiuchi H.,et al.Cell 90:1149-1159(1997).

Images



Anti-RABEP1 Antibody (Center)at 1:2000 dilution + NIH/3T3 whole cell lysates Lysates/proteins at 20 µg per lane. Secondary Goat Anti-Rabbit IgG, (H+L), Peroxidase conjugated at 1/10000 dilution Predicted band size : 99 kDa Blocking/Dilution buffer: 5% NFDM/TBST.

Please note: All products are 'FOR RESEARCH USE ONLY. NOT FOR USE IN DIAGNOSTIC OR THERAPEUTIC PROCEDURES'.