

# NFKBIE Antibody (N-term)

Purified Rabbit Polyclonal Antibody (Pab)

Catalog # AP21348a

## Product Information

---

Application	WB, E
Primary Accession	<a href="#">O00221</a>
Reactivity	Human
Host	Rabbit
Clonality	polyclonal
Isotype	Rabbit IgG
Clone Names	RB52459
Calculated MW	52864

## Additional Information

---

Gene ID	4794
Other Names	NF-kappa-B inhibitor epsilon, NF-kappa-BIE, I-kappa-B-epsilon, IkB-E, IkB-epsilon, IkappaBepsilon, NFKBIE, IKBE
Target/Specificity	This NFKBIE antibody is generated from a rabbit immunized with a KLH conjugated synthetic peptide between 109-141 amino acids from the N-terminal region of human NFKBIE.
Dilution	WB~~1:2000 E~~Use at an assay dependent concentration.
Format	Purified polyclonal antibody supplied in PBS with 0.09% (W/V) sodium azide. This antibody is purified through a protein A column, followed by peptide affinity purification.
Storage	Maintain refrigerated at 2-8°C for up to 2 weeks. For long term storage store at -20°C in small aliquots to prevent freeze-thaw cycles.
Precautions	NFKBIE Antibody (N-term) is for research use only and not for use in diagnostic or therapeutic procedures.

## Protein Information

---

Name	NFKBIE
Synonyms	IKBE
Function	Sequesters NF-kappa-B transcription factor complexes in the cytoplasm, thereby inhibiting their activity (PubMed: <a href="#">9315679</a> ). Sequestered complexes include NFKB1-RELA (p50-p65) and NFKB1-REL (p50- c-Rel) complexes

(PubMed:[9135156](#), PubMed:[9315679](#)). Limits B-cell activation in response to pathogens, and also plays an important role in B-cell development (By similarity).

**Cellular Location** Cytoplasm.

**Tissue Location** Highly expressed in spleen, testis and lung, followed by kidney, pancreas, heart, placenta and brain. Also expressed in granulocytes and macrophages

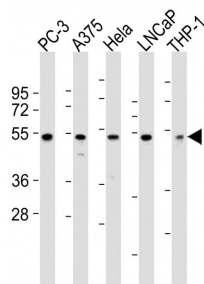
## Background

Inhibits NF-kappa-B by complexing with and trapping it in the cytoplasm. Inhibits DNA-binding of NF-kappa-B p50-p65 and p50-c-Rel complexes.

## References

Whiteside S.T.,et al.EMBO J. 16:1413-1426(1997).  
Mungall A.J.,et al.Nature 425:805-811(2003).  
Mural R.J.,et al.Submitted (JUL-2005) to the EMBL/GenBank/DDBJ databases.  
Li Z.,et al.Mol. Cell. Biol. 17:6184-6190(1997).

## Images



All lanes : Anti-NFKBIE Antibody (N-term) at 1:2000 dilution Lane 1: PC-3 whole cell lysates Lane 2: A375 whole cell lysates Lane 3: HeLa whole cell lysates Lane 4: LNCaP whole cell lysates Lane 5: THP-1 whole cell lysates Lysates/proteins at 20 µg per lane. Secondary Goat Anti-Rabbit IgG, (H+L), Peroxidase conjugated at 1/10000 dilution Predicted band size : 53 kDa Blocking/Dilution buffer: 5% NFDM/TBST.

Please note: All products are 'FOR RESEARCH USE ONLY. NOT FOR USE IN DIAGNOSTIC OR THERAPEUTIC PROCEDURES'.