

# NFE4 Antibody (C-term)

Purified Rabbit Polyclonal Antibody (Pab)

Catalog # AP21375b

## Product Information

---

Application	WB, E
Primary Accession	<a href="#">Q86UQ8</a>
Reactivity	Human
Host	Rabbit
Clonality	polyclonal
Isotype	Rabbit IgG
Clone Names	RB51299
Calculated MW	19019

## Additional Information

---

Other Names	Transcription factor NF-E4, NFE4
Target/Specificity	This NFE4 antibody is generated from a rabbit immunized with a KLH conjugated synthetic peptide between 135-169 amino acids from the C-terminal region of human NFE4.
Dilution	WB~~1:2000 E~~Use at an assay dependent concentration.
Format	Purified polyclonal antibody supplied in PBS with 0.09% (W/V) sodium azide. This antibody is purified through a protein A column, followed by peptide affinity purification.
Storage	Maintain refrigerated at 2-8°C for up to 2 weeks. For long term storage store at -20°C in small aliquots to prevent freeze-thaw cycles.
Precautions	NFE4 Antibody (C-term) is for research use only and not for use in diagnostic or therapeutic procedures.

## Protein Information

---

Name	NFE4
Function	Functions as part of the SSP (stage selector protein) complex, a complex that contributes to the preferential expression of the gamma-gene in fetal erythroid cells by facilitating the interaction of the gamma-globin genes with enhancer elements contained in the locus control region (LCR). The complex binds to the stage selector element (SSE) in the proximal gamma-globin promoter. In contrast, isoform 2 acts as a repressor of gamma-globin gene expression by preventing NFE2 and RNA polymerase II recruitment to the promoter.

<b>Cellular Location</b>	Nucleus.
<b>Tissue Location</b>	Specifically expressed in fetal liver, cord blood and bone marrow. Also expressed in the K562 and HEL cell lines, which constitutively express the fetal globin genes

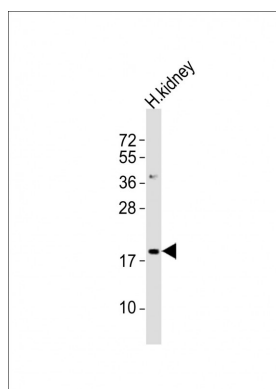
## Background

Functions as part of the SSP (stage selector protein) complex, a complex that contributes to the preferential expression of the gamma-gene in fetal erythroid cells by facilitating the interaction of the gamma-globin genes with enhancer elements contained in the locus control region (LCR). The complex binds to the stage selector element (SSE) in the proximal gamma-globin promoter. In contrast, isoform 2 acts as a repressor of gamma- globin gene expression by preventing NFE2 and RNA polymerase II recruitment to the promoter.

## References

Zhou W.,et al.Mol. Cell. Biol. 20:7662-7672(2000).  
 Hillier L.W.,et al.Nature 424:157-164(2003).  
 Zhao Q.,et al.Blood 107:2138-2145(2006).  
 Zhou W.,et al.J. Biol. Chem. 279:26227-26232(2004).  
 Zhao Q.,et al.J. Biol. Chem. 279:41477-41486(2004).

## Images



Anti-NFE4 Antibody (C-term)at 1:2000 dilution + human kidney lysates Lysates/proteins at 20 µg per lane.  
 Secondary Goat Anti-Rabbit IgG, (H+L), Peroxidase conjugated at 1/10000 dilution Predicted band size : 19 kDa Blocking/Dilution buffer: 5% NFDM/TBST.

Please note: All products are 'FOR RESEARCH USE ONLY. NOT FOR USE IN DIAGNOSTIC OR THERAPEUTIC PROCEDURES'.