

NFE4 Antibody (Center)

Purified Rabbit Polyclonal Antibody (Pab)

Catalog # AP21387c

Product Information

Application	WB, E
Primary Accession	Q86UQ8
Reactivity	Human
Host	Rabbit
Clonality	polyclonal
Isotype	Rabbit IgG
Clone Names	RB51302
Calculated MW	19019

Additional Information

Other Names	Transcription factor NF-E4, NFE4
Target/Specificity	This NFE4 antibody is generated from a rabbit immunized with a KLH conjugated synthetic peptide between 102-136 amino acids from the Central region of human NFE4.
Dilution	WB~~1:2000 E~~Use at an assay dependent concentration.
Format	Purified polyclonal antibody supplied in PBS with 0.09% (W/V) sodium azide. This antibody is purified through a protein A column, followed by peptide affinity purification.
Storage	Maintain refrigerated at 2-8°C for up to 2 weeks. For long term storage store at -20°C in small aliquots to prevent freeze-thaw cycles.
Precautions	NFE4 Antibody (Center) is for research use only and not for use in diagnostic or therapeutic procedures.

Protein Information

Name	NFE4
Function	Functions as part of the SSP (stage selector protein) complex, a complex that contributes to the preferential expression of the gamma-gene in fetal erythroid cells by facilitating the interaction of the gamma-globin genes with enhancer elements contained in the locus control region (LCR). The complex binds to the stage selector element (SSE) in the proximal gamma-globin promoter. In contrast, isoform 2 acts as a repressor of gamma-globin gene expression by preventing NFE2 and RNA polymerase II recruitment to the promoter.

Cellular Location	Nucleus.
Tissue Location	Specifically expressed in fetal liver, cord blood and bone marrow. Also expressed in the K562 and HEL cell lines, which constitutively express the fetal globin genes

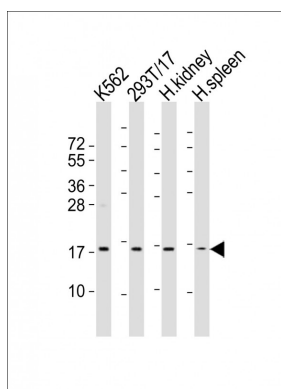
Background

Functions as part of the SSP (stage selector protein) complex, a complex that contributes to the preferential expression of the gamma-gene in fetal erythroid cells by facilitating the interaction of the gamma-globin genes with enhancer elements contained in the locus control region (LCR). The complex binds to the stage selector element (SSE) in the proximal gamma-globin promoter. In contrast, isoform 2 acts as a repressor of gamma- globin gene expression by preventing NFE2 and RNA polymerase II recruitment to the promoter.

References

Zhou W.,et al.Mol. Cell. Biol. 20:7662-7672(2000).
 Hillier L.W.,et al.Nature 424:157-164(2003).
 Zhao Q.,et al.Blood 107:2138-2145(2006).
 Zhou W.,et al.J. Biol. Chem. 279:26227-26232(2004).
 Zhao Q.,et al.J. Biol. Chem. 279:41477-41486(2004).

Images



All lanes : Anti-NFE4 Antibody (Center) at 1:2000 dilution
 Lane 1: K562 whole cell lysates Lane 2: 293T/17 whole cell lysates Lane 3: human kidney lysates Lane 4: human spleen lysates Lysates/proteins at 20 µg per lane.
 Secondary Goat Anti-Rabbit IgG, (H+L), Peroxidase conjugated at 1/10000 dilution Predicted band size : 19 kDa Blocking/Dilution buffer: 5% NFDM/TBST.

Please note: All products are 'FOR RESEARCH USE ONLY. NOT FOR USE IN DIAGNOSTIC OR THERAPEUTIC PROCEDURES'.