

(DANRE) atg5 Antibody (Center)

Purified Rabbit Polyclonal Antibody (Pab)

Catalog # AP21388c

Product Information

Application	WB, E
Primary Accession	Q6DEM4
Reactivity	Human, Mouse
Host	Rabbit
Clonality	polyclonal
Isotype	Rabbit IgG
Clone Names	RB51988

Additional Information

Other Names	Autophagy protein 5 , Q6DEM4
Target/Specificity	This DANRE atg5 antibody is generated from a rabbit immunized with a KLH conjugated synthetic peptide between 167-199 amino acids from the Central region of DANRE atg5.
Dilution	WB~~1:4000 E~~Use at an assay dependent concentration.
Format	Purified polyclonal antibody supplied in PBS with 0.09% (W/V) sodium azide. This antibody is purified through a protein A column, followed by peptide affinity purification.
Storage	Maintain refrigerated at 2-8°C for up to 2 weeks. For long term storage store at -20°C in small aliquots to prevent freeze-thaw cycles.
Precautions	(DANRE) atg5 Antibody (Center) is for research use only and not for use in diagnostic or therapeutic procedures.

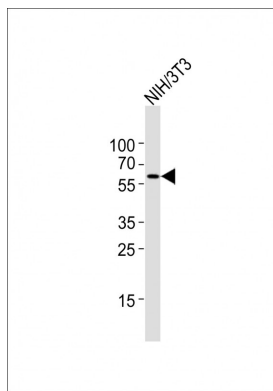
Protein Information

Background

Involved in autophagic vesicle formation.

Images

Anti-atg5 Antibody (Center) at 1:4000 dilution + NIH/3T3 whole cell lysates Lysates/proteins at 20 µg per lane.
Secondary Goat Anti-Rabbit IgG, (H+L), Peroxidase



conjugated at 1/10000 dilution Predicted band size : 32 kDa Blocking/Dilution buffer: 5% NFDM/TBST.

Please note: All products are 'FOR RESEARCH USE ONLY. NOT FOR USE IN DIAGNOSTIC OR THERAPEUTIC PROCEDURES'.